

**New Malden Methodist Church**  
*'The Church in the High Street'*



***Ubuntu***  
**December 2011 & January 2012**

## **Who's who at New Malden Methodist Church**

---

### **Circuit Superintendent**

Rev Bonni-Belle Pickard  
(Tel: 07590 564477)

### **Assisting Minister**

Rev D Finnan

### **Church Workers**

Julia Morton (Youth and Children's Worker)  
Sarah Moore (Administration)  
Angy Stagg (Pastoral work)

### **Stewards**

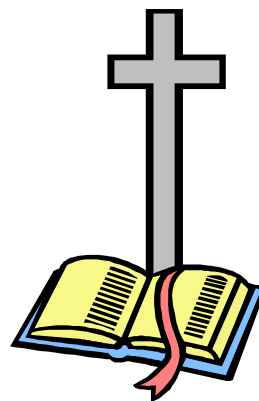
George Alleyne  
Jane Bennett  
Maurice Chattle  
Liz Edwards  
Janet Jones

### **Music Co-ordinator and Organist:**

Dr. Peter Bullett

***“There are different kinds of gifts, but the same Spirit. There are different kinds of service, but the same Lord. There are different kinds of working, but the same God works all of them in all men. Now to each one the manifestation of the Spirit is given for the common good.”***

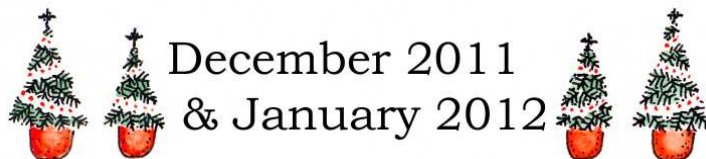
**1 Corinthians 12: 4-7**



## Contents

---

Letter from our Circuit Superintendent	Page 4
Church News and Announcements	Page 6
A Christmas Creed	Page 18
A Lost Generation	Page 19
Remembering Sheila Hurton	Page 20
Circuit News	Page 23
Junior Church Pages	Page 24
Church Services in December 2011 & January 2012	Page 26
Church Services and Activities	Page 27



### Ubuntu

*Ubuntu is an African word highlighting the importance of our common humanity, the relationships we share and the connections that bind us together. If we want to display Ubuntu to others we will be hospitable and compassionate; willing to share and caring in our attitudes. We welcome you to our Church family here at New Malden Methodist Church and invite you to join us in our fellowship and worship.*

The February edition of Ubuntu will be available on Sunday 29th January. Contributions can either be sent by email to: [rosemarie.a.lester@btinternet.com](mailto:rosemarie.a.lester@btinternet.com)  
Or, they can be left in the Church newsletter pigeonhole by Friday, 20th January. Thank you

*Rosemarie*

*(Additional material courtesy of [parishpump.co.uk](http://parishpump.co.uk))*

## Letter from our Circuit Superintendent

---

***What child is this, who laid to rest on Mary's lap, is sleeping?....  
This, this is Christ the King....***

Those lines are from one of America's (and my!) favourite Christmas carols. It came to mind a few weeks ago when I was reading an editor's introductory column in a local magazine. The editor was bubbling forth, describing all her favourite Christmas traditions from baking to decorating the tree to wrapping presents, etc, (and giving us hints as to where to find the relevant articles in that issue of the magazine...). And then there was a paragraph saying that she often found herself wondering on Christmas Day itself, when the magnificent meal was finished, the presents all opened, the "bubbly" all finished, what it had all been about – if it had been worth all the exhausting effort... and whether it might not be easier next year just to book into a hotel and let someone else go to all the trouble of making it a "perfect Christmas". (Of course, she then directed us to the hotel advertisements listed in the magazine...).

In church circles, we're often reminded that "Jesus is the reason for the season" and to "put Christ back into Christmas". Having always celebrated Christmas first and foremost as a religious holiday (holy-day), those slogans just seemed rather glib to me. But after reading that editor's comments I realised again that so many have completely missed "what it's all about". If it is just about family and friends gathering for a grand meal and to exchange presents, then it probably is a lot easier just to do it at a hotel. If it's just about "being of good cheer", then the local pub would suffice as well. And when all the local charities seem to consider Christmas only as a great time to do their annual fundraising, I realise we've not really got the Christmas message across.

Christmas is about celebrating God coming to be with us in our everyday lives, coming to us in absolute vulnerability, coming to us in absolute poverty and earthiness – to transform our everyday lives into the richness of knowing that God is indeed with us – giving us strength and wisdom to undertake whatever is before us, giving us peace and joy to know that we're not left on our own, giving us assurance that we are loved and supported – ah! That's something to celebrate! That's something I want to tell my friends and family through words and gifts and hugs – and a special meal as well!

Sometimes parts of that celebration are best done through tried-and-true traditions of family and congregation and community. But my various life

## Letter from our Circuit Superintendent

---

experiences have also taught me that when I take the time to listen and watch how others do it, I gain new insights. This Christmas season I would encourage each of you to search out opportunities to learn how other cultures answer the question, “What child is this?” Inevitably that searching will provide you with a wealth of new ways and reasons to celebrate the God-who-comes-to-us.

On the family front, most of you will know that our son and daughter-in-law are expecting their first baby shortly before Christmas. So, this Christmas I’m also looking forward to seeing the world through a baby’s eyes – perhaps a little bit like Jesus did when he first came to live on this earth. We will have a first-hand reminder of the innocence, vulnerability, wonder, and joy of God’s gift of creation with us.

Can’t wait till Christmas!

***Love, Bonni-Belle***



## Special Christmas Services

Sunday 4<sup>th</sup> Dec 10.30am  
Gift Service



Sunday 11<sup>th</sup> Dec 5pm Nativity Service

Sunday 18<sup>th</sup> Dec 6.30pm  
Carols by Candlelight



Saturday 24<sup>th</sup> Dec  
5pm Christingle Service  
11.15pm Christmas Eve Communion

Sunday 25<sup>th</sup> Dec 10.30am  
Christmas Family Service

## Church News and Announcements

---

### **O Christmas Tree, O Christmas Tree**

The sparkly Christmas Tree Festival returns to New Malden Methodist Church on Saturday 17 December this year. Around 24 local organisations will be showing off their artistic flair and decorating trees for their favourite charities. Last year saw entries from a host of local organisations including the Scouts, Guides, Brownies, Tudor Williams and various Church groups. The Festival usually raises a few hundred pounds for charities so make sure you pop into the Church to view the trees and vote for your favourite one. There is a general collection box if you are undecided, having seen the high standard of all the entries.



You can view the trees at the following times:

- from 10.00am till 12.00pm on Saturday 17 December
- from 6.00pm on Sunday 18 December leading up to Carols by candlelight at 6.30pm
- 10.00am–2.00pm and 6.00pm-7.30pm, again with singers Monday 19 December
- 10.00am–2.00pm on Tuesday 20 December
- 10.00am-2.00pm on Wednesday 21 December
- 10.00am-2.00pm on Thursday 22 December
- 10.00am-2.00pm on Friday 23 December

New Malden Methodist Church is bang on the High Street and the coffee bar in the Church is open 10am-12pm on Saturdays and 10am-2pm on weekdays so why not have a break from Christmas shopping, stop for coffee and cake and take a look at the trees?

## **Church News and Announcements**

---

### **Summary of November Notices**

#### **CHURCH FAMILY NEWS**

May I thank everyone who so kindly supported, encouraged, and prayed for me, during my past year of illness. The Royal Marsden has confirmed that I am now fully recovered, much to my pleasure and theirs...and I am very thankful for what you and they have done.

God bless,  
*Eric Murray*

#### **OLD 10 PENCE PIECES**

There have been several old 10p coins in the collection recently. Please check that the change you are kindly donating is legal tender otherwise we are unable to use it.

*Many thanks*

#### **MOBILE PHONE & INK CARTRIDGE RECYCLING**

If you would like to recycle your mobile phone or **INKJET** cartridges, please do so in the recycle for charity envelopes available in the welcome area. Proceeds will go to the Fircroft Trust.

#### **WINTER NIGHT SHELTER**

There is a sign-up sheet on the notice board for anyone who is able to help at the Night Shelter which will take place on six consecutive Thursdays from 19<sup>th</sup> January to 23<sup>rd</sup> February. Details of training days are also on the sheet.

*Des Hancock*

#### **TRANSPORT FOR ANGIE'S MEMORIAL SERVICE**

A coach will be here at 11.30 to go Wesley's Chapel on Saturday 3<sup>rd</sup> December. It will leave at 11.45. Please see Sarah if you wish to buy a ticket, priced £6.00 each.

In addition, Bonni-Belle is organising a visit to the Chapel that morning for the Membership Class. They will leave Surbiton around 9 am and do a tour of the chapel, museum, and house in the morning and stay on for the service in the afternoon. If there are others who want to join this group, they would be most welcome. They plan to travel by train/bus. Please contact Bonni-Belle for details. If there is room, they will return on the coach.

*Sarah Moore*

## Church News and Announcements

---

### JANUARY SOCIAL

This is an invitation for those who would like to participate in 'The Generation Game' on Saturday 14th January to find a willing or otherwise partner and sign up (on the sheet in the welcome area). We need only 4 couples, you do not need to be related although if you are that is fine. The youngest person must be between 12 and 18 and the older member of the team over 21.

Anyone who has a real talent they can offer to demonstrate for a game is also invited to sign up. The prizes will be amazing! Don't miss out find your partner quickly!

*Julia Morton*

---

### The Christmas Card Tree

- Once again, we will be having our "Christmas Card Tree" in the Welcome area. It's a great way of sending a greeting to all your friends in the Church, helping the environment by buying (and later throwing away) fewer cards – and helping charity.
- From Advent Sunday there will be a big poster in the Welcome Area, in the shape of a Christmas Tree. Just write one card to "everyone" (exactly what you write is up to you) and stick it on the tree.
- Work out what you would normally spend on Christmas cards for your friends at Church and put that amount into the box behind the counter.
- This year we will collect the money to support NCH Action for Children.

Of course, if there's a special person you want to give a particular card to, you still can. But this way, we can all get a card from "everybody" *and* significantly (and directly) benefit a good cause.



## Church News and Announcements

---

# Music in New Malden

## *Series Four 2011 – 2012*

We are delighted to announce the fourth series of concerts of music on authentic instruments master-minded by two local professional musicians  
Jane Booth and John Irving.

An hour's music at 3 o'clock on the second Sunday of the month followed by tea and cake, with a retiring collection in aid of charity.

<b>8<sup>th</sup> January</b>	Jane Booth – <i>chalumeau</i> Henrietta Wayne – <i>violin</i> Karen Glen – <i>harpsichord</i> <i>with string trio</i> Graupner and Fasch (chalumeau concerto)
<b>11<sup>th</sup> March</b>	Jennifer Morsches – <i>cello, piccolo cello</i> Robin Bigwood – <i>harpsichord</i> Bach, Lanzetti and Francischello
<b>10<sup>th</sup> June</b>	John Irving and Steven Devine – <i>fortepiano</i> Mozart piano 4 hands



### Flower Rota for December 2011 & January 2012



<b>Date:</b>	<b>Donated by:</b>	<b>Arranged by:</b>
December 4th	Mrs D Downey	Doreen
December 11 <sup>th</sup>	Mr D Willis	Pam W
December 18 <sup>th</sup>	Mrs B Cowan	Birgit
December 25 <sup>th</sup>	Mrs R Lester	
January 1 <sup>st</sup>	Mrs E Alleyne	Jan
January 8 <sup>th</sup>	Mrs C Marsden	Pam V
January 15 <sup>th</sup>	Mrs S Philpot	Sheila
January 22 <sup>nd</sup>	Mrs V Miller	Julia
January 29 <sup>th</sup>	Mr D Bryan	Doreen

Church News and Announcements



# **A Generation Game Evening**

This will be an evening of fun, laughter and food!

Based on the famous Generation Game

come and join in the entertainment.

Saturday 14<sup>th</sup> January 2012

In

The Upper Hall

Featuring the new stage curtains!!

Tickets available in the new year from Church Office  
Adults £8 Children under 12years £4 Concession £5

Proceeds to start the redecoration fund for the sanctuary.

“What do tickets make?”....”Paint!”



## Church News and Announcements

---

### Diary Dates for December 2011 & January 2012



#### December

Tuesday 6 <sup>th</sup>	2.30pm	WAGs - Devotional
Tuesday 6 <sup>th</sup>	8.00pm	Meeting Point - Devotional Evening
		Donald Finnan
Monday 12 <sup>th</sup>	7.30pm	Wives – Flower arranging for Christmas – Members
Tuesday 13 <sup>th</sup>	2.30pm	WAGs – Life at the Police Station Tony Townsend
Tuesday 13 <sup>th</sup>	7.00pm	Junior Badminton
Tuesday 13 <sup>th</sup>	7.00pm	Meeting Point - Carol Singing - Members Kingston Lodge
Monday 19 <sup>th</sup>	7.30pm	Wives – Christmas Carols and Readings
Tuesday 20 <sup>th</sup>	2.30pm	WAGs – Carols & Mince Pies
Tuesday 20 <sup>th</sup>		Meeting Point - No meeting
Tuesday 27 <sup>th</sup>		WAGs – No meeting
Tuesday 27 <sup>th</sup>		Meeting Point - No meeting

#### January

Tuesday 3 <sup>rd</sup>		WAGs - No meeting
Tuesday 3 <sup>rd</sup>		Meeting point – No meeting
Monday 9 <sup>th</sup>	7.30pm	Wives – Collections – Members' Evening
Tuesday 10 <sup>th</sup>	2.30pm	WAGs – Devotional
Tuesday 10 <sup>th</sup>	7.00pm	Junior Badminton
Tuesday 10 <sup>th</sup>	8.00pm	Meeting Point - No meeting
Wednesday 11 <sup>th</sup>	8.00pm	Church Council Meeting
Saturday 14 <sup>th</sup>	6.30pm	Church Social – The Generation Game
Tuesday 17 <sup>th</sup>	2.30pm	WAGs – Members' Afternoon

## Church News and Announcements

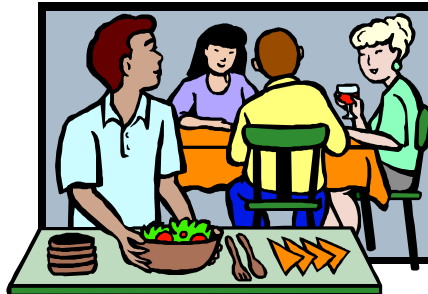
---

Tuesday 17 <sup>th</sup>	8.00pm	Meeting Point - Devotional Evening Donald Finnan
Thursday 19 <sup>th</sup>		Night Shelter
Monday 23 <sup>rd</sup>	7.30pm	Wives – Meal 'IN'
Tuesday 24 <sup>th</sup>	2.30pm	WAGs – The Danube – Tony Chalk
Tuesday 24 <sup>th</sup>	7.00pm	Junior Badminton
Tuesday 24 <sup>th</sup>	8.00pm	Meeting Point - Insights into Peru Graham Tillotson
Thursday 26 <sup>th</sup>		Night Shelter
Tuesday 31 <sup>st</sup>	2.30pm	WAGs – Humour in the Law – John King
Tuesday 31 <sup>st</sup>	8.00pm	Meeting Point - Church Quiz Gordon Teanby

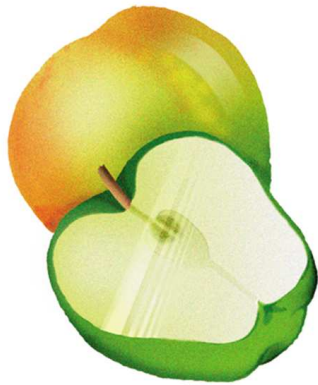
---

### The 3 F's'

Robert and Janet Jones would like to host a simple gathering to share 'Faith, Food and Fellowship'. We all have to eat, so once a month we will meet on a Friday evening in homes and have our evening meal together (brought by those who meet). During the course of the evening, we will think together about something that has happened during the week, reflect on it, and try to see what it means for our faith, our life and our practical response to that situation. This is not a group; anybody can come, and come when they are able. All that we ask is that you enjoy eating and are happy to engage in conversation about a topical issue from a Christian perspective.



The first date we have in mind is on Friday 27<sup>th</sup> January 7.30pmish at our home. We will give you the address nearer the time. Do ask Rob and Jan if you have anything else you would like to know.



# Training

This is an exciting new (launched 2006) innovative course for all those involved with children on a Sunday.

Come along and meet others who work with the same age group as you. Swap ideas, games activities, learn new ones and have fun.

Starting **Sunday 8<sup>th</sup> January** at New Malden Methodist Church 2.30-430pm

Then Sunday 26<sup>th</sup> February, Sunday 25<sup>th</sup> March and Sunday 29<sup>th</sup> April

For more details contact Julia [nmmcyw@hotmail.co.uk](mailto:nmmcyw@hotmail.co.uk) or church office 02089421288

## Church News and Announcements

---

### NMMC Extraordinary AGM – 6<sup>th</sup> November 2011 Meeting Summary

- Apologies for absence had been received from Rev Bonni-Belle Pickard and in her absence the meeting was chaired by Rev Stan Brown. The meeting was attended by 51 church members and friends.
- This general church meeting had been called to provide an opportunity for discussion and to reach a decision on the possible purchase of the new Methodist hymn book, *Singing the Faith* (StF).
- Peter Bullett drew attention to his report on StF. He highlighted that a great deal of care has gone into the compilation of the hymn book and that it contains a discriminating selection of hymns and songs; some familiar, some new. He said that in the 6 weeks he had spent studying StF he had become convinced of its merits.
- Peter said that it would be helpful to consult with the worship group in order to consider the most appropriate use of the new musical “inspiration” for our congregation. It would also be important to consider “anew” how we use our audio-visual facilities; purchasing the word, music and electronic versions of StF would allow the necessary flexibility to do this.
- Those attending the meeting were invited to raise any queries and voice their views on the possibility of purchasing StF. The following points were raised:
- Several people who had already seen the new hymn book felt that enormous thought had gone into StF and that it is a considered and broad ranging attempt to widen our worship and bring it into the current age; without losing sight of our Methodist tradition. It will become the official Methodist hymn book and has already been purchased by the other churches in the circuit; with copies being given to the local preachers.
- Concern was raised about whether this purchase was necessary in the current difficult economic climate. Our existing hymn books allow us the choice of over 1,500 hymns and songs and we could wait until the financial situation improved before making a decision

## Church News and Announcements

---

to purchase StF.

- Whilst this concern was accepted, it was pointed out that our current hymn books are in poor condition and will need to be replaced at some point. It was also noted that it would be cheaper to purchase StF before the end of the year; taking advantage of the pre-publication discount.
- There were a number of questions concerning the size and weight of the various versions of StF and also the copyright arrangements regarding the electronic version. The general feeling was that a decision could not be made on numbers until more people had had the chance to see the different versions. Copies of each would be made available in the welcome area for people to view and comment on and clarification would be sought over the copyright arrangements. A decision would be taken at a later date on the numbers of the different versions to be purchased.
- It was agreed however, that NMMC would purchase a sufficient number of StF for our congregation (around 170) and that StF would become our primary hymn book. (The vote was carried by the majority of those attending with 1 vote against and 4 abstentions)
- Tony Chalk was authorised to advance the necessary money from Church funds to purchase StF before the end of December 2011, in order to take advantage of the pre-publication discount. Offers of donations and bequests have already been received (from Bob Bridges' family and from Gordon Teanby; with the former covering the cost of 20 copies of the music version for the music group).
- Several people voiced a willingness to make donations towards the cost of the purchase and also wondered if it was possible to order copies for personal use. It was agreed that a system would be put in place to allow for donations and personal orders to be made.
- Our current hymnbooks will be retained and a decision may be needed on which books to keep in the church chairs; depending on how they fit and how often they are used.

## Church News and Announcements

---

- Stan Brown invited those present to consider that the purchase of StF would commit us to a process of exploring how we can best support, extend and renew our worship music rather than simply adding new hymns and songs.
- Stan Brown thanked Peter for his hard work in producing his excellent report.
- The meeting concluded with the sharing of The Grace.

*Rosemarie Lester - Church Council Secretary*

---

### Meeting Point

The programme for December and January is as follows:

<i>December 6th</i>	<b>Devotional Evening</b> led by Donald Finnan
<i>December 13th (7pm)</i>	<b>Carol Singing at Kingston Lodge</b> (Due to a double booking at Fountain Court, we shall not be singing there this year - hence the change of time from the one shown in the Meeting Point Programme.)
<i>January 17th</i>	We start the New Year with a <b>Devotional Evening</b> led by Donald Finnan
<i>January 24th</i>	Graham Tillotson, Leslie Parker's nephew, will give us some " <b>Insights into Peru</b> ". Graham is widely travelled and if you haven't been to one of his talks before you have missed a treat! Do join us if you can.
<i>January 31st</i>	<b>Church Quiz</b> , prepared by Gordon Teanby. This annual event is always very popular with the Church Family. If you or your organisation would like to get a team of four together we would love you to join us, or simply come along and we'll make up teams of those who are there on the night. It's an evening not to miss.

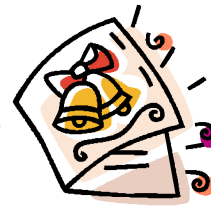
*Carol Dadds*

## Church News and Announcements

---

### Christmas is coming...

Please remember to keep your used postage stamps, UK and Overseas, for me to pass on to Cancer Research UK for them to sell to raise funds. Please cut or tear them off the envelope or paper, leaving a good margin so as not to damage the perforation. Leave them in the "H" section of the Church pigeon holes or in the box in the kitchen/lounge. The appeal lasts all the year and is not just for Christmas.



*Thank you, Nicky Horton*

---

### Some Christmas Smiles!

#### Christmas presents

Catching her in the act, I confronted our 3-year-old granddaughter. "Are you opening your little sister's presents?" I demanded. "No," she innocently replied, "I'm just helping her share."

#### Virgin mother

A ten-year old, under the tutelage of her grandmother, was becoming quite knowledgeable about the Bible. Then one day she floored her grandmother by asking, "Which Virgin was the mother of Jesus? The Virgin Mary or the King James Virgin?"

---

### A Christmas Creed

- I believe in Jesus Christ and in the beauty of the gospel begun in Bethlehem.
- I believe in the One whose spirit glorified a little town; and whose spirit still brings music to persons all over the world, in towns both large and small.
- I believe in the One for whom the crowded inn could find no room; and I confess that my heart still sometimes wants to exclude Christ from my life today.

## Contributions from Members

---

- I believe in the One whom the rulers of the earth ignored, and the proud could never understand; whose life was among common people, whose welcome came from persons of hungry hearts.
- I believe in the One who proclaimed the love of God to be invincible.
- I believe in the One whose cradle was a mother's arms, whose modest home in Nazareth had love for its only wealth, who looked at persons and made them see what God's love saw in them, who by love brought sinners back to purity, and lifted human weakness up to meet the strength of God.
- I confess my ever-lasting need of God; the need of forgiveness for our selfishness and greed, the need of new life for empty souls, the need of love for hearts grown cold.
- I believe in God who gives us the best of himself.
- I believe in Jesus, the son of the living God, born in Bethlehem this night, for me and for the world.

*Author unknown*



---

## The Lost Generation

There are now one million unemployed people aged 16-24. These unemployed are young, willing and desperate. For a young person not able to find a job the message is simple; we do not value you.

- What does the Church have to say?
- Is it in the rules to say anything?
- I cannot find anything in the rule book, so we will ignore it.

For too long the Church has tried to avoid real human need; too precious to speak out for the vulnerable.

*Des Hancock, Social Responsibility Secretary*

## **Contributions from Members**

---

### **Sheila Hurton and the Kingston upon Thames Methodist Circuit**

*This is taken from the oration given by John Kelsey at the Service of Thanksgiving for Sheila's life on 14<sup>th</sup> October at Surbiton Hill.*

"I realise that there are some here who are not of the Methodist tradition and may therefore need some explanation of what a Circuit is. A Circuit consists of a group of churches. While the churches themselves are self-governing, the invitation and local management of ministers is the responsibility of the Circuit which also manages their housing and carries out various other duties in relation to the group of four churches (in our case, Surbiton Hill, New Malden, Chessington and Kingston) which comprise the Circuit. Those charged with such duties are the Circuit Stewards of whom Sheila was one. I add this by way of explanation in case any of you were under the misapprehension that Sheila was involved in some religious form of motor sport.

Friends of Sheila who are not members of local churches may not be aware that one of our ministers, Rev Dr Angie Shier-Jones died in September – just over 7 weeks after Sheila. Thinking of both of them it was sometimes difficult to decide which one was the irresistible force and which one the immovable object. Angie was a life force contained within a small, frail body and yet could be very stubborn on many things. Sheila, on the other hand – and I better be careful how I express this – had a significant physical presence and yet she often seemed to be living life in the super-fast lane. She could certainly move swiftly – particularly on the tennis court.

Sheila and Angie were both diagnosed with cancer during 2009. They had (I am told) a considerable email correspondence discussing, no doubt, the trials of waiting around in hospitals, the indignities of various forms of medical testing, the anxiety in waiting for test results and the suffering caused by the side effects of chemotherapy. It was typical of Sheila (and indeed Angie also) that she took something that we would consider a grave disadvantage and turned it to good use in providing support and comfort to a fellow sufferer. However this was not mere opportunism but rather an act underpinned by love and concern for other people.

Despite her cancer Sheila continued to perform her duties as a Circuit Steward and, as if she did not already have enough to do, helped to

## Contributions from Members

---

organise periods of Sabbatical leave for both Angie and Bonni-Belle. She also got to grips with the minutiae of the HR aspects of our lay employees in a complete review of our employment practices and conditions – a task which for most of us would be mind-numbingly tedious. As you have heard already, a few days before her death Sheila presented a report (connected with her hospice work) from a wheelchair. I have here the Circuit cheque book and I will be conducting some circuit business after this service. I do so without a twinge of guilt knowing that I have Sheila's full approval to do so. She was not one to let sentiment (and especially not her own suffering) get in the way of practicality.

Sheila, it must be said, could also show a stubborn streak. The years 2006-8 were not easy ones for the Circuit Stewards who had at times to stand firm on a number of issues. Sheila's stubborn streak was very useful (as was that of other stewards) in enabling us to hold firm. She could indeed be the immovable object when necessary. She was a strong woman and possibly for that reason the only one I have ever known with a cat called Tarzan.

I was thrown into this troubled situation in June 2007. Sheila showed fantastic support (as she had for Gary my predecessor) right from the start and really did help to ease my passage into the mystical rites of being a Circuit Steward. Within weeks I was even invited to the delayed Golden Wedding celebrations for her and Michael. I was embraced (both literally and metaphorically) almost as a family member. I should pay tribute here to Michael for his support of and love for Sheila over the years. He is one of the few people here who knows what it is like to live in the eye of a Perfect Storm so great was the activity going on around him. He was amazingly tolerant of me contacting Sheila at all hours and often showing up unannounced on the doorstep. There were times, I am sure, when he must have wondered whether I was merely a frequent visitor or actually secretly resident in some other part of the house.

Sheila and I both loved good food and good music. She regularly helped out with the music at Kingston even during some of those periods when she was having a tough time with her medication. We only got the chance to perform together once at an event at Chessington and I do regret not having the opportunity to have played or sung with her some more serious music. She was a wonderful hostess and although I have had quite a few meals prepared by her the one I remember best was a totally

## Contributions from Members

---

improvised affair during the middle of the day in the last week of August 2007 with Circuit stationing consultation papers spread all over the kitchen and dining area. By some miracle we managed to keep the food and the papers separate although I do remember a swift intervention by Sheila to prevent one particularly vitriolic set of comments being smeared with French dressing although, in truth, that might have been a better fate for them.

Sheila was broad-minded in the best sense of that phrase. In church work this meant that she looked beyond Surbiton Hill to the Circuit and to the District and even the whole Methodist Church in this country and beyond. She certainly had a real love for people of different cultures. She was genuinely excited to be asked last year's Annual Methodist Conference as a London District Representative. A large number of people get excited (or at least excitable) at the Methodist Conference – the number of people however who find it exciTING may be somewhat less.

Nonetheless she did not neglect her local church here nor indeed her personal spiritual life even among all the huge quantity of activity. That maintained her deep personal faith, which combined with her deep love of people, underpinned all she did. In spite of that seriousness of purpose Sheila was a lady who liked to have fun (in good Methodist moderation of course). That is why I am wearing a shirt with purple stripes. She would want us to have some fun here.

I do not mind admitting that I cried when I read Michael's email informing us that Sheila had died. She was that sort of person whose love and personality was such that her absence has left a large void in all our lives. Before and after Circuit-based events Sheila and I always had a big hug and I cherish the memory of each one.

Thinking about today's service made me ask myself the question "Are there committees in heaven?" If there are, they are about to change. They probably already have. Sheila, thank you for all the love you have given to us. If it is appropriate may you rest in peace. If that is inappropriate may you keep everyone else on their toes.

*John Kelsey*



## Around the Circuit .... December news from your Circuit Coordinator

The circuit news page is back in print after a three-month gap. Christmas is a time when each church has a very busy calendar, all largely similar. Noted below, are special events not listed on the Quarterly Plan where, of course, you will find information on all the regular services.

### *Connexional Events*

**A special trip to Korea** The KCF (Korean Christian Fellowship) is planning to provide an opportunity for British Methodists to explore Korean Methodism as well as to experience wonderful Korean culture.

**Dates:** From 9th April to 18th April, 2012

**Cost:** You need to pay only for your flight ticket and small amount of administration fee. All other expenses (accommodation, local travels, food, etc.) will be covered by some Korean churches.

**How to apply:** You can apply for this trip through either email or telephone. Maximum number is 20. Due to the high interest in this trip, please apply ASAP. There will be several preparatory meetings before the departure.

**For further information:** You can contact either the secretary of the KCF or other chaplains of the KCF.

Alex Jun Secretary: [saintjun17@hotmail.com](mailto:saintjun17@hotmail.com), Mobile: 07883 490106;  
Seung-Wook Jung: [dullose71@hotmail.com](mailto:dullose71@hotmail.com), Mobile: 07886 717492;  
Sang-Don Han: [cellhsd@hotmail.com](mailto:cellhsd@hotmail.com), Mobile: 07786 536390

**And finally ....** May I take the opportunity of wishing everyone a peaceful and happy Christmas. If your church has an event it wishes to share with the circuit, please forward details to me for inclusion in this section of each church's newsletter/magazine.

Daphne Baker email: [circuitoffice@kingstoncircuit.org.uk](mailto:circuitoffice@kingstoncircuit.org.uk) Tel 07510 548931

Circuit Office, Surbiton Hill Methodist Church, 39 Ewell Rd., Surbiton KT6 6AF

## Children's Pages

---

**Hi**

Do you sometimes feel, like me, that the waiting for Christmas gets longer every year? There seem to have been cards and tinsel in some shops almost since before you went back to school! As a member of the Guide movement I'm all for being prepared but there are limits.

Or you may be impatient for it to come, waiting expectantly for the parties, presents, food ,carols and "Christmas specials" on TV.

It can be hard counting down to the big day. Advent calendars can help. Just don't be tempted to eat all the chocolate in one go if that is the kind you have.

If you think waiting 24 days is long spare a thought for the Israelites who waited nearly 700 years for God's promise of Jesus to arrive. What a gift he was though when he arrived! He changed history and the way we can know God.

Which is why we celebrate his birth, with those we love. How great is that.

Happy Christmas

*Julia*



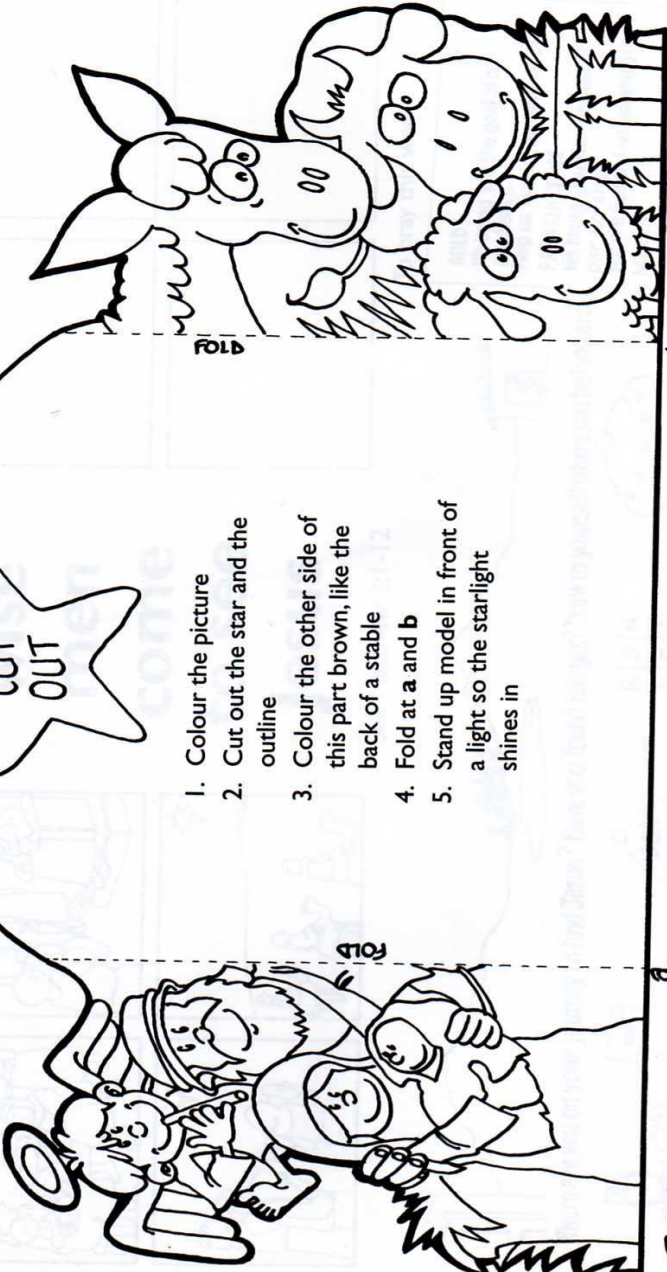
Christmas Day

Palm Tree Activity Sheet 35

See Luke 2:1-20



1. Colour the picture
2. Cut out the star and the outline
3. Colour the other side of this part brown, like the back of a stable
4. Fold at **a** and **b**
5. Stand up model in front of a light so the starlight shines in



AND THEY LAID HIM IN A MANGER

## Church Services in December 2011 & January 2012

---

<b>4th December</b>	10.30am Service (AAW/Gift) 6.30pm Service (HC)	Rev R Jones Rev D Finnan
<b>11th December</b>	10.30am Service (HC) 5.00pm (Nativity)	Rev S Brown Local Arrangement
<b>18th December</b>	10.30am Service (W) 6.30pm (Carols)	Mrs J Boulton Local Arrangement
<b>24th December Christmas Eve</b>	5.00pm (Christingle) 11.15pm Service (HC)	Local Arrangement Rev R Jones
<b>25th December Christmas Day</b>	10.30am Service (AAW)	Mrs R Quaye
<b>1st January New Year's Day</b>	10.30am Service (W)	Mrs L Davis
<b>8th January</b>	10.30am Service (Cov/HC) 6.30pm Service (BS)	Rev R Jones Rev D Finnan
<b>15th January</b>	10.30am Service (W) 6.30pm Service (CH/LITE)	Mr D Lloyd Mrs P Vincent
<b>22nd January</b>	10.30am Service (W) 6.30pm Service (BS)	FR D Kerridge Rev D Finnan
<b>29th January</b>	10.30am Service (W) 6.30pm Service (Circuit - SH)	Mrs C & Mr D Doe Rev B Pickard & Rev J Impey

### Notes

<b>AAW</b>	All Age Worship
<b>BS</b>	Bible Study
<b>CH/LITE</b>	Church Lite
<b>Cov</b>	Covenant
<b>HC</b>	Holy Communion
<b>W</b>	Preaching Service



## Church Services and Activities

---

<b>Sunday</b>	10.30am	Junior Church (3-16) & Crèche (0-3)
	10.30am	Morning Worship
	11.30am	Junior Choir
	6.30pm	Evening Worship
	6.30pm	Activ8
<b>Monday</b>	8.00pm	Badminton Club
	7.30pm	Wives and Friends Fellowship (fortnightly*)
<b>Tuesday</b>	2.30pm	Women's Afternoon Guild*
	4.15pm	Rainbows (age 5-7)
	5.15pm	Brownies (age 7-10)
	6.30pm	Class Meeting
	7.00pm	Junior Badminton (age 12-16) (fortnightly)
	8.00pm	Meeting Point*
<b>Wednesday</b>	10.30am	Bible Study (term-time)
	12.15pm	Holy Communion in the Church
<b>Thursday</b>	9.45am	Toddlers Group (term-time)
	6.30pm	Youth Club (Monthly, 1st Thursday in month)
<b>Friday</b>	10.00am	Friday Fellowship (once a month)
	5.15pm	2nd Brownies (age 7-10)
	7.00pm	Guides (girls, age 10-14)
<b>Saturday</b>	10.30am	Prayers in the Church (15 mins)

\* Programme details announced separately. Please ask a Steward.

**Coffee** is served in the Welcome Area, Monday to Friday, 10.00am to 2.00pm and Saturday, 10.00am to Noon.

**Abacus Pre-School** (term-time) Monday to Friday, 9.00am to 12.00 noon and Monday, Wednesday and Friday, 9.30am to 12.30pm

**Housegroups** meet on various days. Please ask for details

**Church Office telephone number: 020 8942 1288**

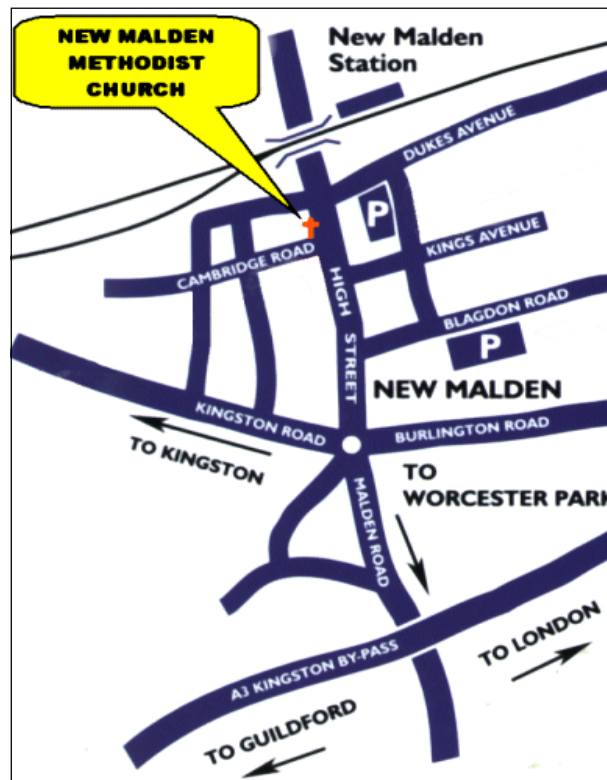
**Church Website: [www.newmaldenmethodistchurch.com](http://www.newmaldenmethodistchurch.com)**

**Church Admin Email: [nmmc@hotmail.co.uk](mailto:nmmc@hotmail.co.uk)**

## Travel Directions

### New Malden Methodist Church

49 High Street  
New Malden  
KT3 4BY



### Trains

New Malden Station (South West Trains)  
2 minutes walk away

### Buses

**K1** (New Malden to Kingston) and **213** (Kingston to Sutton)  
Both pass the door

**131** (Kingston to Wimbledon) is a short walk from the roundabout at the Kingston/ Burlington Road junction