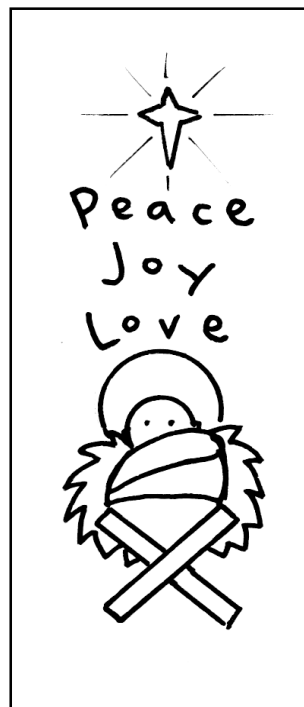


**New Malden Methodist Church**  
*'The Church in the High Street'*



***Ubuntu***

**December 2010/January 2011**

## **Who's who at New Malden Methodist Church**

---

### **Minister**

Rev.Dr. Angela Shier-Jones

26 Linkside, New Malden, Surrey, KT3 4LB  
Tel: 020 8942 0333

### **Church Workers**

Julia Morton (Youth and Children's Worker)  
Sarah Moore (Administration)

### **Stewards**

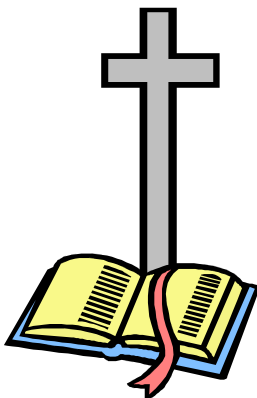
George Alleyne  
Jane Bennett  
Liz Edwards  
Lourdes Gallardo  
Janet Jones

### **Junior Steward**

Emily Hampton

### **Music Co-ordinator and Organist:**

Dr. Peter Bullett



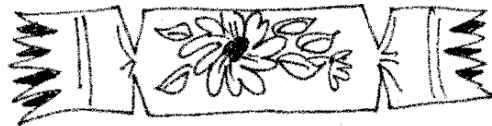
*"Above all, maintain constant love for one another, for love covers a multitude of sins. Be hospitable to one another without complaining. Like good stewards of the manifold grace of God, serve one another with whatever gift each of you has received. Whoever speaks must do so as one speaking the very words of God; whoever serves must do so with the strength that God supplies, so that God may be glorified in all things through Jesus Christ. To him belong the glory and the power forever and ever. Amen"*

**1 Peter chapter 4: 8-11**

## Contents

---

<b>Welcome Letter</b>	<b>Page 4</b>
<b>Church News and Announcements</b>	<b>Page 6</b>
<b>Fircroft Sunday Lunches - The End of an Era</b>	<b>Page 16</b>
<b>The Peace Candle</b>	<b>Page 17</b>
<b>Circuit News</b>	<b>Page 18</b>
<b>Junior Church Pages</b>	<b>Page 20</b>
<b>Church Services in December 2010/January 2011</b>	<b>Page 22</b>
<b>Church Services and Activities</b>	<b>Page 23</b>



### Ubuntu

*Ubuntu is an African word highlighting the importance of our common humanity, the relationships we share and the connections that bind us together. If we want to display Ubuntu to others we will be hospitable and compassionate; willing to share and caring in our attitudes. We welcome you to our Church family here at New Malden Methodist Church and invite you to join us in our fellowship and worship.*

The February edition of Ubuntu will be available on Sunday 30th January. Contributions can either be sent by email to:  
rosemarie.a.lester@btinternet.com  
Or, they can be left in the Church newsletter pigeonhole by Friday, 21st January 2011. Thank you

**Rosemarie**

*Additional material courtesy of parishpump.co.uk*

## Welcome Letter

---



is a youth group that meets on Sunday evenings.

**Dear Friends,**



At a recent meeting we read a Native American story of the persistent hummingbird.

Once there was a great forest fire and all the birds and animals rushed to escape. Hummingbird went to the river and collected a drop of water. The other birds laughed.

“What are you doing?” they asked. She replied,

“I’m doing what I can.”

Christmas is a time to think of other people and to give a helping hand. We remember the words of John Wesley

“Do all the good you can,  
By all the means you can,  
In all the ways you can,  
In all the places you can,  
At all the times you can,  
To all the people you can,  
As long as ever you can.”

The innkeeper in Bethlehem who did not reply ‘No room’ certainly gave a helping hand to Mary and Joseph by offering them his stable. What a time? What a place? What a way to do good? Having no place to sleep is still a problem and later this winter members of our church family will be enabling homeless people to sleep in our building. What a time? What a place? What a way to do good?

We are going to be helping hands at home this Christmas doing everything we can to do good even to our brothers and sisters! We will be remembering others who are less fortunate at the Gift Service which is

## Welcome Letter

---

just one of the many special services held over the Christmas period.  
There is an open invitation to all the services because Jesus was born for all.

We made up this litany and we hope that its message will help us all.

We will ask boldly,

No matter who is listening.

We will live justly

Even if we have to make sacrifices.

We will ask boldly,

Despite our failings.

We will live justly

When others bar the way.

We will ask boldly,

For we know God will answer.

We will live justly

Because there is so much inequality.

We will ask boldly and live justly this Advent and beyond.

**We hope you have lovely Christmas.**

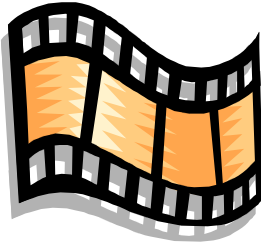
**From**



## Church News and Announcements

---

### Heretics Club



What on earth is the world saying about religion through the media and popular culture these days? What image of the church and Christianity is found in films? Come to Heretics Club and find out. Heretics Club is a once a month highly informal get together. *Come and share a DVD and join our friendly discussion group.*

**Our next get together will be at Conifers, High Drive on Monday, 6th December, starting at 8.00pm.**

**(Also on Monday, 3rd January at 8.00pm)**

---

### Flower Rota for December 2010/January 2011

<b>5th December</b>	Mrs D Downey
<b>12th December</b>	Mr D Willis
<b>19th December</b>	Mrs B Cowan
<b>26th December</b>	Mrs R Lester
<b>2nd January</b>	Mrs E Alleyne
<b>9th January</b>	Mrs M Sydney & Mrs C Marsden
<b>16th January</b>	Mrs S Philpot
<b>23rd January</b>	Mrs V Miller
<b>30th January</b>	Mr D Bryan



---

*God became man to turn creatures into sons; not simply to produce better men of the old kind but to produce a new kind of man.*

**CS Lewis**

## Church News and Announcements

---

### Service of Lessons and Carols

19<sup>th</sup> December, 2010 at 6.30 pm

The Music Group will once again be contributing carols to our evening Christmas celebration and everyone is very welcome to join us, whether they have sung with us before or not! There will be two rehearsals on Saturday mornings and a Sunday afternoon rehearsal with tea on the evening of the service itself. Please sign up on the list in the Welcome Area or have a word with Peter Bullett (8942 0666) to find out more.

Lessons and Carols:	Sunday 19 <sup>th</sup> December	6.30pm
	Rehearsal and tea	4.30 pm
Rehearsals:	Saturday 11 <sup>th</sup> December	10.15 – 11.45 am
	Saturday 18 <sup>th</sup> December	10.15 – 12 noon

***Peter Bullett***

---

### Listen to music – and get well

Make the most of all the musical events around this Christmas, because it will help keep you whole. In recent years music has been found to help people with many illnesses, ranging from cancer to stroke, dementia, depression and alcoholism.

Music can improve aspects of brain function and reduce stress levels. One study even found that music can help speed up the healing process among women in hospital. Music helps regulate heartbeat and breathing rates – many believe this is because music is closely linked with the rhythms of the body. Calming music really does calm us down.

People who play in an orchestra or sing in a choir often experience a profound feeling of well-being and 'group solidarity' after a session together. So as the carols and concerts get going – make the most of them this year!



***(From Parish Pump)***

## Church News and Announcements

---

### NMMC Christmas Tree Festival O Christmas Tree, O Christmas Tree



The sparkly Christmas Tree Festival returns to the Church on Saturday 18 December this year. Around 20 local organisations will be showing off their artistic flair and decorating trees for their favourite charities. Last year saw entries from a host of local organisations including the Fircroft Trust, Scouts, Guides, Brownies, Lunchbowl Network, New Malden Women's Institute, Tudor Williams and various Church groups. A whopping £450 was raised, up from £300 the previous year.

It would be great if we could beat this total despite the credit crunch so pop in to view the trees and vote for your favourite one at the following times:

- From 10.00am till 12.00pm on Saturday 18 December
- From 5.00pm on Sunday 19 December leading up to the service of Nine Lessons and Carols at 6.30pm
- 10.00am–2.00pm and 4.30-7.00pm, with carols at 6.00pm, on Monday 20 December (the trees always look really lovely in the evening when its dark outside)
- 10.00am–2.00pm on Tuesday 21 December  
10.00am-2.00pm on Wednesday 23 December



“The hinge of history is on the door of a Bethlehem stable.”

**Ralph Sockman**

## Church News and Announcements

---

### 50/50 Clothes Sale

Thursday 9<sup>th</sup> December 7.30pm – 9.00pm in the Back Coffee Lounge

This works by:

1. Register by emailing [nmmc@hotmail.co.uk](mailto:nmmc@hotmail.co.uk) and Julia or Sarah will give you a number.
2. Put your name inside an envelope with brief description of the garment and price.
3. Put the envelope onto the garment with a safety pin with the following written on the outside of the envelope  
**Allocated number**  
**Garment e.g. dress**  
**Size**  
**Price**
4. Bring the garments with labelled envelopes attached on Sunday 5<sup>th</sup> December to the rail at the top of the stairs by the upper hall or give to Julia or Sarah during the week. These will be locked away until the sale.

If the garment is sold you will receive 50% of the money and the other 50% will go to the SCRUF appeal.

Unsold garments will be returned to you or donated to a charity shop if not collected within a week. You will receive your money once all the cheques etc have been banked.

Please ensure the garments are in good order and securely labelled.

At the sale please bring friends and family, a charge of £1 entrance will be made. If it fits, it's the right colour and price it's yours!



## Church News and Announcements

---

### Christmas Shoe Box Appeal

Junior Church and other organisations connected with the Church will again be filling shoe boxes for needy children, families and older people in Eastern Europe this Christmas via the Rotary International Shoebox Scheme.



The shoe boxes are now available in the Welcome Area, so, if you want to fill one or more boxes yourself, you can pick them up at any time, together with a leaflet giving ideas of what to include. Please mark your box with the type of contents and the age of the child if applicable. Do not seal the box.

We also need lots of items to help fill the 'Junior Church' boxes and there will be baskets for this purpose in the Welcome Area over the next few weeks, together with a copy of the leaflet explaining what to include.

Junior Church will be having a 'Box filling' morning in the Church on Saturday, 4th December, from 10 am to 12 noon. Do come along if you can spare an hour or two to help. The boxes will be dedicated at the Gift Service on Sunday 5th December. If you are filling your own box, please bring it along on that day or earlier if you wish.

If you have any queries, please contact Carol Dadds, Julia Morton, Julie Haines or any member of the Junior Church staff.

---

### Christmas is coming...

Please remember to keep your used postage stamps, UK and Overseas, for me to pass on to Cancer Research UK for them to sell to raise funds. Please cut or tear them off the envelope or paper, leaving a good margin so as not to damage the perforation. Leave them in the "AB" section of the Church letter rack or in the box in the kitchen/lounge. The appeal lasts all the year and is not just for Christmas.



**Thank you,  
Bob Bridges**

## Church News and Announcements

---

### December Diary

<b>Weds 1<sup>st</sup></b>	8-10pm	Night Shelter Volunteer Training Course, St Peter's Church Hall, Norbiton KT2 6QL
<b>Saturday 4<sup>th</sup></b>	10.00-12.00	Coffee Bar New Malden WI
<b>Saturday 4<sup>th</sup></b>	10.00-12.00	Shoe Box Filling
<b>Sunday 5<sup>th</sup></b>	10.30am	Gift Service
<b>Monday 6<sup>th</sup></b>	7.30pm	Wives: The Quakers & the Chocolate Makers Jean Vesey
<b>Tuesday 7<sup>th</sup></b>	2.30pm	WAGS: Linda & Sheila - Christmas
<b>Tuesday 7<sup>th</sup></b>	8.00pm	Meeting Point: Devotional – Eric Murray
<b>Thursday 9<sup>th</sup></b>	7.30-9pm	50/50 Clothes Sale
<b>Saturday 11<sup>th</sup></b>	10.00-12.00	Coffee Bar WAGs
<b>Sunday 12<sup>th</sup></b>	5.00 pm	Junior Church Nativity
<b>Tuesday 14<sup>th</sup></b>	2.30pm	WAGs: Carols
<b>Tuesday 14<sup>th</sup></b>	8.00pm	Meeting Point: Church outside the Walls – Robert Jones
<b>Weds 15<sup>th</sup></b>	8.00pm	KCAH Night Shelter Training Meeting, Choir Vestry
<b>Friday 17<sup>th</sup></b>	am	Abacus Nativity
<b>Friday 17<sup>th</sup></b>	12.00-2.00 & 6.00-7.30pm	Decorating trees for Christmas Tree Festival
<b>Saturday 18<sup>th</sup></b>	10.00-12.00	Coffee Bar Shoe Box Appeal
<b>Saturday 18<sup>th</sup></b>	2pm	Big News in Bethlehem (Lantern Theatre Company)
<b>Saturday 18<sup>th</sup> – Weds 22<sup>nd</sup></b>		Christmas Tree Festival
<b>Sunday 19<sup>th</sup></b>	6.30pm	Nine Lessons and Carols

## Church News and Announcements

---

<b>Tuesday 21<sup>st</sup></b>	6.30pm	Meeting Point Carol Singing Fountain Court
	7.45pm	Meeting Point Carol Singing Kingston Lodge
<b>Monday 20<sup>th</sup></b>	7.30pm	Wives: Christmas Carols & Readings
<b>Weds 22<sup>nd</sup></b>	12.15pm	Community Carol Service
<b>Friday 24<sup>th</sup></b>	5.00pm	Christingle Service
	11.15pm	Christmas Eve Communion
<b>Saturday 25<sup>th</sup></b>	10.30am	Christmas Day Family Service
<b>Sunday 24<sup>th</sup></b>	10.30am	Morning Worship
<b>Weds 29<sup>th</sup></b>	10.00-12.00	Dismantling of Christmas Tree Festival

## January diary (dates as far as known)

<b>Tuesday 4<sup>th</sup></b>	2.30pm	WAGs: Devotional Afternoon
<b>Tuesday 4<sup>th</sup></b>	8.00pm	Meeting Point: Devotional - Donald Finnan
<b>Monday 10<sup>th</sup></b>	7.30pm	Wives: Mary Preston Holidays - Gloria Tavinier
<b>Tuesday 11<sup>th</sup></b>	2.30pm	WAGs: Musical Afternoon
<b>Tuesday 11<sup>th</sup></b>	8.00pm	Meeting Point: Canada – Coast to Coast Pam & Alan Vincent
<b>Thursday 13<sup>th</sup></b>	8-10pm	Night Shelter Volunteer Training Course, Berrylands Christian Centre, 41 King Charles Road KT5 8PF
<b>Tuesday 18<sup>th</sup></b>	2.30pm	WAGs: Joanne Chinnery – Mind
<b>Tuesday 18<sup>th</sup></b>	8.00pm	Meeting Point: The Orthodox Church Angie Shier-Jones
<b>Weds 19<sup>th</sup></b>	7.30pm	Property & Finance Committee
<b>Thursday 20<sup>th</sup></b>	8.15pm	Family Committee

## Church News and Announcements

---

<b>Thursday 20<sup>th</sup></b>	KCAH Night Shelter
<b>Monday 24<sup>th</sup></b> 7.30pm	Wives: Meal 'IN'
<b>Tuesday 25<sup>th</sup></b> 2.30pm	WAGs: Jennifer Townsend All Through the Raid
<b>Tuesday 25<sup>th</sup></b> 8.00pm	Meeting Point: Church Quiz Gordon & Kay Teanby
<b>Weds 26<sup>th</sup></b>	Church Council
<b>Thursday 27<sup>th</sup></b>	KCAH Night Shelter

---

## Night Shelter 2011

The Night Shelter will commence at this church on Thursday, 20<sup>th</sup> January and will continue on a weekly basis for six weeks. This is part of the outreach of the church; as is the counselling service.

A big thank you in advance to all those who have volunteered. A planning meeting for the rotas will take place on Wednesday, 15<sup>th</sup> December at 8.00pm

***Des Hancock***

---

## Coffee Bar Volunteers

I would be very grateful if anyone is able to add their name to the list of dedicated volunteers who run the coffee bar. This is such a valuable part of our Church life but can only continue to run as it does every day if we have 2 volunteers for each shift (10-12 and 12-2). If you have not done it before, it is not onerous and can be a very enjoyable interaction with the local community. Please let me know if you are able to offer any time, even one slot per month would be a huge help.

***Many thanks, Sarah***



## Church News and Announcements

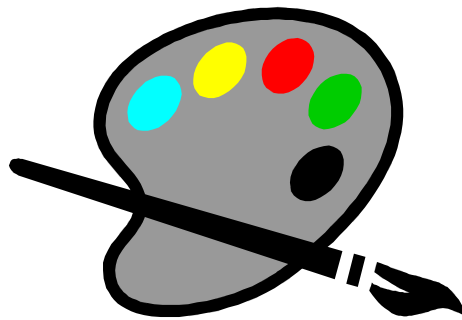
# Create

Friday, 10th December

2.30-5.00pm

If you have not yet had the opportunity to experience 'Create', then do join us for our next 'workshop' when the theme will be

## Christmas



Come and share with us in art, music and poetry; Explore new ideas and allow Scripture to stimulate your faith and imagination;

Try your hand at drawing, sketching, calligraphy, painting, collage, clay modelling, cross-stitch, or one of the many other art forms on offer.

You don't have to be an expert to come to 'Create' (none of us are!) just willing to relax, experiment, and enjoy the gift of creative time.

All materials are provided free of charge, though you may bring your own if you prefer.

**You will be very welcome!**

(Please note that our next Create workshop will take place on Friday, 14th, January, 2.30pm - 5.00pm)

## Church News and Announcements

### The Christmas Card Tree



Once again, we will be having our “Christmas Card Tree” in the Welcome area.

It’s a great way of sending a greeting to all your friends in the Church, helping the environment by buying (and later throwing away) fewer cards – and helping charity.

From Advent Sunday (28 November) there will be a big poster in the Welcome

Area, in the shape of a Christmas Tree.

Just write one card to “everyone” (exactly what you write is up to you) and stick it on the tree.

Work out what you would normally spend on Christmas cards for your friends

at Church and put that amount into the box behind the counter.

This year we will collect the money to support NCH Action for Children.

Of course, if there’s a special person you want to give a particular card to,

you still can. But this way, we can all get a card from “everybody”

*and*

significantly (and directly) benefit a good cause.



**Judith Jewell**



## **Fircroft Sunday Lunches The End of an Era**

For more than 30 years, local churches have been providing Sunday lunches at Fircroft for people with mental health problems who would otherwise be alone on that day. The scheme, originally started by Mary Kahaan, aimed to provide a hot, generally roast, meal in a family atmosphere, with the opportunity to socialise with the church teams and other members just as one might do in a normal family.

Being invited to come to Fircroft on a Sunday was also considered part of the members' rehabilitation as they were required to get there under their own steam and arrive by about 11 am for coffee, so that the people catering knew roughly how many they were feeding that day. They were also encouraged to lay the tables for lunch and help clear and wash up after the meal, just as they might if it were an ordinary family meal.

Some of the members have been coming along for many years, one at least since John and I started with the URC in 1981. Some come for only a short time and then move on with their lives but we are always there for those who need longer term support. We have also made good friends among the members and I particularly remember a lady called Doris who, when I was ill many years ago, wrote me a lovely card, saying that if ever she could be of any help, or if I needed to talk to anyone, she would be there for me. It was quite an education - you think you are there to help people and sometimes you forget that they like to help too!

Originally, we used to cater for much larger numbers than we have in recent years, usually about 40 to be on the safe side as many church teams would consist of 6-8 people and then there could be anything from 24 to 30 Fircroft members at the meal. After lunch we would join in games of Scrabble, dominoes, cards, etc. and sometimes people from the churches would come along and organise a sing-song, perhaps bringing their guitars or using the piano at Fircroft. Then we would enjoy tea and home-made cakes together before the members left at around 4 pm. In recent years, fewer people have been attending and they are often happy to share a game of cards or chat amongst themselves but we are always there to join in where appropriate.

Sadly, the lunches are now coming to an end. Many churches are finding it difficult to get volunteers to provide the lunches so there are now a

## Article

---

number of Sundays when Fircroft is not open. This can cause some confusion to those who normally attend, so, as there were likely to be even more Sunday closures in 2011, the trustees decided to close the service altogether at the end of this year.

Fortunately, there are more places now where people can get a reasonably priced lunch on a Sunday and Fircroft will be funding a member of staff for three months to accompany those members who wish to go out for lunch together and the hope is that those members will eventually set up their own lunch group, so that they are not alone on a Sunday.

One nice thing is that Fircroft have invited all the Sunday volunteers to lunch on one of two Sundays in February and March and the members will be involved in providing this lunch as a thank you to all those who have fed them in the past.

Our three teams, Stella and Maurice, Judith and Ian, and John and I, with our helpers, feel privileged to have been part of Fircroft in this particular way for so many years and we wish the members well for the future.

***Carol Dadds***

---

## The Peace Candle

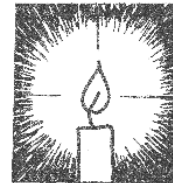
For many years the peace candle has been lit at the commencement of each service. Unfortunately there has been little development from that point. An annual peace service was started a few years ago but disappeared into the ether.

Would a young person growing up in this Church be inspired to be an International peace campaigner or a human rights lawyer?

Seeing a young soldier with facial injuries, no legs and one hand missing on the screen at the Festival of Remembrance made me think - do we have the right to expect such sacrifice without having a go at preventing it in the first place?

As Wilfred Owen wrote, "The pity of war"!

***Des Hancock***



## Circuit News

---

# Around the Circuit . . . . . DECEMBER news from your Circuit Coordinator

### *Circuit Events*

**“Joe Carpenter & Son”** A humorous and moving version of the Nativity story in vivid verse and song. This informal drama presented by adults and children from Surbiton Hill Methodist Church is based on the familiar Christmas narrative. Performances take approximately an hour.  
Saturday afternoon 4 December 4.00pm Open Dress Rehearsal followed by a Pizza Party  
Sunday morning 5 December 10.30am Morning service includes Joe Carpenter & Son  
Just come - no tickets are necessary. Enquiries to: Jeannette Barwick (020 8941 8551) [jbarwick313@btinternet.com](mailto:jbarwick313@btinternet.com) Retiring collections will be for Chase Hospice Care for Children

**Advent Journey** Spend a short while following an advent journey through seven stages in the church at Chessington. At each display you can pause, ponder and pray. Open times will be Tuesday and Thursday mornings 7-23 December and Friday 17 December all from 10-12am (The coffee bar will be open ), plus Saturday 11 December 8.30-11am, Sunday 19 December 4-6pm. Everyone is welcome.

**Autumn Bible Studies Rev** Donald Finnan’s last bible study in the series based on Jeremiah is on Thursday 9 December and is entitled “The price I paid”. Venue: Chessington at 7.30pm for 8pm.

**“Big News in Bethlehem”** is a Lantern Arts Theatre Production at 2pm on Saturday 18 December in the church at New Malden. Entrance £3. This is the first of a number of Circuit Youth Events being arranged for all of our churches, although this one will actually be suitable for all ages. Come and support this circuit event which lasts approximately an hour.

**Carols by Candlelight Monday** 20 December 8pm at Chessington. A service with a choir, drama, reflections and quite a few carols too. (Not listed on the plan but the doors are open to all.)

**Christmas Day Lunch** There is no need to spend Christmas Day on your own. Join in the festivities at Chessington. To book your place, contact Rev Dr Donghwan Kim on 020 8241 7979. (You will need to arrange your own transport.)

*District Events*

**“Does God go to work?”** Wednesday evenings, £7.50 including a two course meal 6.45 (for 7pm) - finish by 9pm. Advance booking is essential with The Church Office, Methodist Central Hall, Westminster, London SW1H 9NH, or email [church@mchw.org.uk](mailto:church@mchw.org.uk) No later than the Sunday prior to the meeting..

1 December “BULLYING IN THE WORK PLACE”

How can we deal with bullying effectively & maintain Christian integrity? Speaker: Diana Kotei

2 February 2011 “WHAT HAS RECESSION DONE TO US?”

What important lessons have we learned during recession? Speaker: Chris Moorhouse

**First Tuesday - New work in theology and pastoral studies, in lively company**

Open to all: geared for presbyters, deacons and supernumeraries as well as interested lay people. All meetings 10.45am coffee for 11am, paper and discussion - with an invitation to lunch in the cafe at 1pm. Venue: Broadbent Room, Westminster Central Hall. The Programme is as follows:

7 December Act your Age, not your shoe size: maturity in ordained ministry. Speaker: The Revd Dr Helen Cameron, Co-Director for the Centre for Ministerial Formation and Oversight Tutor for Methodist students, The Queens Foundation for Ecumenical Theological Education, Birmingham.

**South East Evangelism Regional Gathering** Following on from the event at Surbiton Hill, the next gathering is on Tuesday 7 December at Park Lane Methodist Church, Wembley, HA9 7SG from 10.30 am – 3.00 pm. A buffet lunch can be booked by sending a £5 cheque payable to ‘Methodist Church’ to ESD Admin, CCEA Cluster, Methodist Church House, 25 Marylebone Road, London, NW1 5JR before 30th November (asap!) The speaker will be Jenny Ellis - Spirituality & Discipleship Officer, Methodist Church Connexional Team. For travel directions go to: [www.parklanemethodist.org.uk](http://www.parklanemethodist.org.uk) For more information contact [Andrew Carter](mailto:Andrew.Carter@methodist.org.uk) - Evangelism Network Development Officer, or call. 020 7467 3793

**And finally ....** if your church has an event it wishes to share with the circuit, please forward details to me for inclusion in this section of each church’s newsletter/magazine.

**May I wish you all a happy Christmas**

**Daphne Baker email: [circuitoffice@kingstoncircuit.org.uk](mailto:circuitoffice@kingstoncircuit.org.uk) Tel 07510 548931**  
**Circuit Office, Surbiton Hill Methodist Church, 39 Ewell Rd.,**  
**Surbiton KT6 6AF**

**(The Circuit Office will close on Thursday 23Dec and reopen on Tues 4 Jan)**

## Children's Pages

---

**Hi**

When we have the Christmas Tree Festival again this year you will be able to see so many different ways to decorate them. One will be decorated with special Christian symbols called Christmons. They have been made by various members of the Shell Club over the years and are very special. They are different signs that all have an important message to represent. They were symbols used by early Christians to show their faith to the world. They were always made in gold and white to symbolize majesty and purity. White is the liturgical colour for Christmas and stands for our Lord's purity and perfection. GOLD represents His majesty and glory. On the Chrismon tree, tiny white lights symbolize Christ as the light of the world.

Here are what some of them mean, I wonder what others you may see?

One of the early signs of Christendom was the **fish**. The Greek word for fish is IXTHUS. This is an acrostic for the Greek words for Jesus Christ, Son of God, Saviour. **Angels** heralded the birth of our Saviour.

**Shepherd's Crook**--The symbol of the Good Shepherd (Jesus) and also for the shepherds who visited the manger in Bethlehem. **Crown** -- Jesus is the King of kings and Lord of lords. **The Eye of God**--We are reminded that God can see even into the depths of the human heart. **Orb and cross**--The orb (symbol of the earth) has a cross over it. We are reminded that the world needs Christ.

A **heart** reminds us of how much God loves the world.

The **dove** is a sign of peace and a symbol of the Holy Spirit

A lone **Shell** represents baptism; with three drops attached it becomes the Baptism of Jesus.

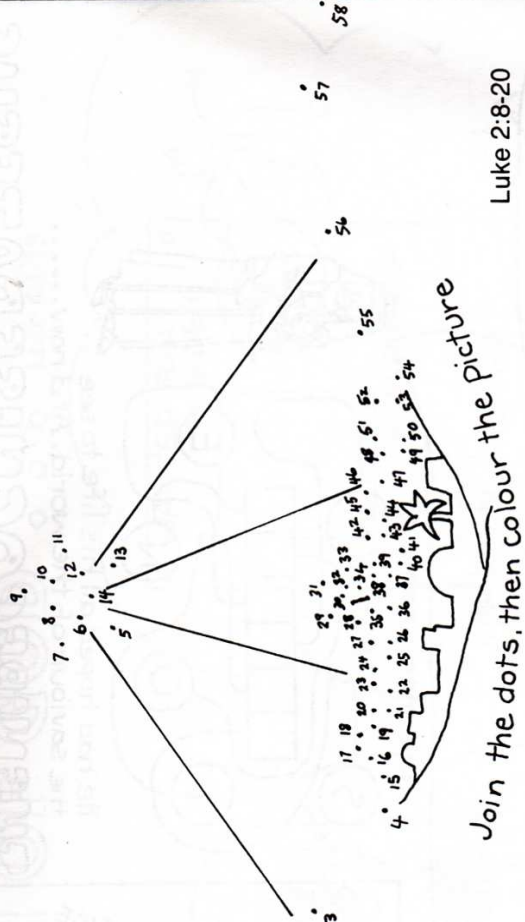
You may also see **Butterflies, flowers, crosses** of various kinds and **stars**.

Happy spotting!

*Love through Jesus*  
*Julia*



# JESUS IS BORN



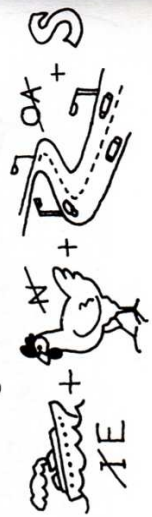
Join the dots, then colour the picture

Luke 2:8-20

G	L	O	R	Y	A	B
M	U	N	S	A	N	G
D	O	G	E	D	G	C
O	B	H	N	F	E	E
T	T	J	I	A	L	H

'GLORY TO GOD  
IN THE HIGHEST'  
SANG THE ANGELS

Who were the first people to be told the good news?



## **Church Services in December 2010/January 2011**

---

<b>5th December</b>	10.30am Service (AAW/G/P) 6.30pm Service (CC/HC)	Rev R Jones Rev D Finnan
<b>12th December</b>	10.30am Service (HC) 6.30pm Service (N)	Rev. Dr D Kim Local Arrangement
<b>19th December</b>	10.30am Service (W) 6.30pm Service (Carols)	Rev S Jung Local Arrangement
<b>24th December Christmas Eve</b>	PM Service (Christingle) Midnight Service (HC)	Local Arrangement Rev R Jones
<b>25th December Christmas Day</b>	10.30am Service (F)	Mrs P Vincent & Mrs L Gallardo
<b>26th December</b>	10.30am Service (W)	Rev. Dr D Kim
<b>2nd January</b>	10.30am Service (W) 6.30pm Service (Cov/HC)	Mrs L Davis Rev. Dr A. Shier-Jones
<b>9th January</b>	10.30am Service (Cov/HC) 6.30pm Service (W)	Rev. Dr A. Shier-Jones Rev. Dr S Talbot
<b>16th January</b>	10.30am Service (AAW) 6.30pm Service (CC)	Rev. Dr A. Shier-Jones Rev. Dr A. Shier-Jones
<b>23rd January</b>	10.30am Service (W) 6.30pm Service (HC)	Mrs E Stuart Rev. Dr A. Shier-Jones
<b>30th January</b>	10.30am Service (HC) 6.30pm Service (Circuit)	Rev. Dr A. Shier-Jones Rev. Dr A. Shier-Jones

### **Notes**

**HC** - Holy Communion  
**CC** - Café Church  
**F** - Family Service  
**G** - Gift Service  
**N** - Nativity Service

**W** - Preaching Service  
**AAW** - All Age Worship  
**Cov** - Covenant Service  
**P** - Parade

## Church Services and Activities

---

<b>Sunday</b>	9.30am	Bible Study/Holy Communion (fortnightly)
	10.30am	Junior Church (3-16) & Crèche (0-3)
	10.30am	Morning Worship
	11.30am	Junior Choir
	6.30pm	Evening Worship
	6.30pm	Activ8
<b>Monday</b>	8.00pm	Badminton Club
	7.30pm	Wives and Friends Fellowship (fortnightly*)
<b>Tuesday</b>	8.00pm	Heretics Club (1st Monday in month)
	2.30pm	Women's Afternoon Guild*
	4.15pm	Rainbows (age 5-7)
	5.15pm	Brownies (age 7-10)
	6.30pm	Class Meeting
	7.00pm	Junior Badminton (age 12-16) (fortnightly)
<b>Wednesday</b>	8.00pm	Meeting Point*
	10.30am	Bible Study (term-time)
	12.15pm	Holy Communion in the Church
<b>Thursday</b>	6.30pm	Shell Club (age 7-12)
	9.45am	Toddlers Group (term-time)
<b>Friday</b>	10.00am	Friday Fellowship (once a month)
	2.30pm	Create Art Workshop (once a month)
	7.00pm	Guides (girls, age 10-14)
<b>Saturday</b>	10.30am	Prayers in the Church (15 mins)

\* Programme details announced separately. Please ask a Steward.

**Coffee** is served in the Welcome Area, Monday to Friday, 10.00am to 2.00pm and Saturday, 10.00am to Noon.

**Abacus Pre-School** (term-time) Monday to Friday, 9.00am to 12.00 noon and Monday, Wednesday and Friday, 9.30am to 12.30pm

**Housegroups** meet on various days. Please ask for details

**Church Office telephone number: 020 8942 1288**

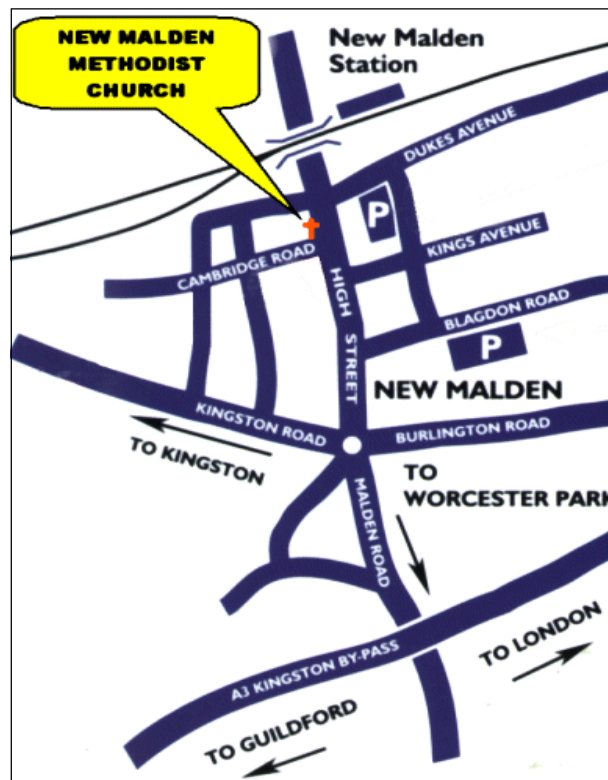
**Church Website: [www.newmaldenmethodistchurch.com](http://www.newmaldenmethodistchurch.com)**

**Church Admin Email: [nmmc@hotmail.co.uk](mailto:nmmc@hotmail.co.uk)**

## Travel Directions

### New Malden Methodist Church

49 High Street  
New Malden  
KT3 4BY



### Trains

New Malden Station (South West Trains)  
2 minutes walk away

### Buses

**K1** (New Malden to Kingston) and **213** (Kingston to Sutton)  
Both pass the door

**131** (Kingston to Wimbledon) is a short walk from the roundabout at the Kingston/ Burlington Road junction