



New Malden  
Methodist Church  
*At the heart of the High Street*



# Spotlight

## November 2023

### Message from Karl

Greetings!

November appears to be the month for remembering. On the 1<sup>st</sup> and 2<sup>nd</sup>, there's All Saints and All Souls, not widely marked within Methodism, but upon which the communion of saints and the faithful departed, respectively, are acknowledged. The 5<sup>th</sup> sees us called to ensure that 'gunpowder treason' should never be forgotten, as the old rhyme goes, before we move to Armistice Day on the 11<sup>th</sup> and Remembrance Sunday on the 12<sup>th</sup>, which need no introduction. Less well known, the 20<sup>th</sup> marks the Transgender Day of Remembrance, commemorating those killed across the world for simply trying to lead authentic lives.

A common theme running through these is that of violence, from the martyrdom of early Christians at the hands of the Roman Empire, to the mechanised slaughter seen in the mudbaths of the Somme and Passchendaele. The situation in Israel and Palestine, with all its horrors, reminded me of a BBC series from a few years ago called Gunpowder, based on the stories of the Roman Catholic conspirators behind the Gunpowder Plot. It was slammed by both viewers and critics at the time because of its graphic (if historically accurate) depictions of torture and execution. Yet, what was interesting about this series for me wasn't this question, but the focus of a good few commentators on parallels between Robert Catesby, Guy Fawkes and so forth and modern-day terrorists. While rightly seeking to call out apologies for terrorism, it is telling that the same people seemed to have a blind-spot when it comes to state violence, despite the show's unflinching depictions of the brutality of those who no doubt saw themselves as the defenders of peace. What we choose to see and remember matters.

Rachel Mann's excellent book *Fierce Imaginings* reflects on the First World War and what one might say of Christ in its aftermath. She writes, "God in Christ is all about passion: he becomes our victim, handed over to us, the subject of our jealousies, fears and our desire to be in control"; hence, "this is a man thoroughly caught up in and destroyed by the violence of the world". And yet, God "invites us to commit to another way", for "this risen God is not one who glories in his sacrifice, nor comes seeking revenge". God's invitation is to "reconciliation", and "the challenge is to make a commitment to a Way of going on which

rejects silencing, objectification and injuring". For Mann, this is enabled by the Eucharist, by the regular sharing of bread and wine, which can never be the same each time because it involves taking into our very selves the divine Victim who is also our Redeemer. In other words, this is a remembering (or perhaps re-remembering) that transforms.

So, my invitation to you throughout this month of remembering is twofold. Firstly, if we are to hear the voices of those who were and are silenced, we need to have courage to question the narratives of the powerful and privileged, for remembering is rarely a neutral act. Secondly, reconciliation will only come about through a commitment to real peace, shalom, which is about more than simply the absence of violence; it's about fullness of life, and begins in the everyday re-remembering God brings about. Are we willing to allow our remembering to be transformative, so we might be true channels of peace in a hurting and broken world?

Every blessing, Karl

---

## Royal Visit Wednesday 8<sup>th</sup> November

The reason that Spotlight was delayed this month is that the following information was embargoed and we thought it was worth holding publication to include this exciting news.

King Charles III is coming to New Malden!!

His Majesty wants to come here in advance of a Korean state visit to the UK on 21-23 November as New Malden is the centre of the Korean community in the UK.

A venue was required to be the focal point for the visit to host the various meetings with Korean local groups and New Malden Methodist Church was suggested as the ideal location in the heart of the High Street.

The King will therefore be coming to NMMC on the afternoon of Wednesday 8<sup>th</sup> November between 2pm and 3pm to meet various Korean community and culture groups.

For obvious security reasons the Palace have tight control on the visit and only those authorised people who are directly involved in the visit will have access to the Church.

Also, Wesley's will not be open to the public at all on that day.

However, people are encouraged to congregate outside in the High Street for when the King arrives and departs and we will serve tea and coffee in Wesley's when His Majesty has left.

---

## Church Family News

Congratulations to Elvis Addai who went up to Cambridge last month to study Law. We all wish him well in his studies.

---

## Spotlight's Safeguarding Space



The **Methodist** Church 

Sunday 19<sup>th</sup> November 2023 will see the annual recognition of safeguarding in churches across the country.

One of the ways we can all make New Malden Methodist Church a safe place is by keeping ourselves informed of the ways to keep ourselves & others safe. The Methodist Church's website has some interesting blogs about safeguarding & can be found at

[www.methodist.org.uk/safeguarding](http://www.methodist.org.uk/safeguarding)

I would be interested to hear any comments or questions you may have.

Liz Edwards, Safeguarding Officer

---

## Link to Hope Family & Elderly Shoe Box Appeal

Christ Church New Malden send shoe boxes every year to people in need in the same way that we used to do 'Love in a Box'. My friend co-ordinates the boxes, including delivering them to West Sussex, and would be happy to deliver any boxes from us.

The requirements are more strict than they used to be but there is a very comprehensive leaflet explaining what is required. I would be happy to deliver any boxes that we have to my friend.

Please ask me or Julia for a copy of the leaflet if you are interested in filling a box. We would ask that you please only supply completed boxes filled according to the instructions on the leaflet.

Many thanks, Sarah Moore

---

## Next Spotlight Issue

Please send all submissions to Sarah Moore at [nmmc@hotmail.co.uk](mailto:nmmc@hotmail.co.uk) (or in my church pigeonhole). As you can see from this month's eclectic mix, I am happy to receive anything you think might be of interest: memories, news of members, advice for life, poems, photos, recipes etc.

The deadline for the next issue is Wednesday 29<sup>th</sup> November.

## Solomon in all his glory . . .

Here are our two, new Vaillant ecoTEC plus 65kW boilers. "Solomon in all his glory was not arrayed like one of these" – or so it seems to those of us who have been keenly awaiting their installation and connection to our heating system! This was fired up at the beginning of last week since when we and our hirers have been enjoying toasty spaces during the colder snaps. Engineers are attending this week for some fine-tuning in light of the system being fully operational. Our pipes and radiators were flushed in preparation for connecting the new boilers and the two bottles on top of the right one show the circulating water before (red cap) and after (blue). You can just see the tops of the plate heat-exchangers under the boilers, which together with filters and a magnetic cleaner keep the water clear. So it's nearly all over bar the continuing fund-raising .....



Peter Bullett *Property Co-ordinator*

---

## Harvest Festival

The church was decorated beautifully for Harvest Festival on Sunday 1<sup>st</sup> October Write up.



Thank you to the decorators including Greta, Julia and Stella



Eunjung resplendent in her hambo



## Wesley's Community Hub

“Therefore welcome one another as Christ has welcomed you, for the glory of God.” Romans 15:7 ESV

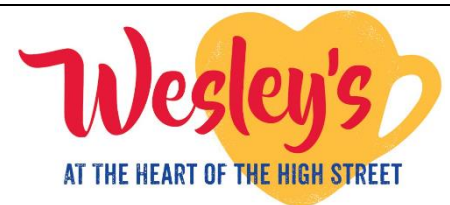
Following Jesus' example, we aim to be welcoming to everyone, especially at Wesley's - the entrance of our church for God's glory.

We're grateful for the many warm-hearted volunteers who joined us as we expanded our hours in October. Please pray for them and the people we serve to find peace and joy here. We thank the Lord for giving us this warm space. Help us to be a source of kindness to all who come to Wesley's.

### Latest News

**Wesley's Café:** Our café is getting busier, but some hours, like 10-11 and 1-2, are quieter. It's been just three weeks since we extended the hours, so give it time. We're thankful for over 35 volunteers. Thank you for your continuous support by checking and filling in any gaps after the church service on Sunday.

**Walking with Nature:** Since last month, 40 people have joined our nature walks. Many come when they can, enjoying nature and making friends. We



welcome newcomers, hoping they'll become regulars (to our cafe &/ walking group).  
Is this in your prayer list?

Stone Painting for Children (One-off 1/2 Term Event): Our recent stone painting event was a hit, and we owe our gratitude to Angela, one of our dedicated volunteers, who spearheaded the event with support from Mary and Karen. Several parents have inquired about the possibility of repeating this activity and some adults from our walking group and café customers are also interested.



We're planning more events; for updates please follow us on Instagram/Facebook. If you can help, let us know.

Your likes and follows on Wesley's Instagram and Facebook mean a lot to us.

For the latest updates and more information, follow Wesley's on Facebook and Instagram:

👉 Facebook: <https://www.facebook.com/wesleysnewmalDEN/>

📷 Instagram: <https://www.instagram.com/wesleysnewmalDEN/>

Stay tuned and be a part of our community's journey!

Every blessing, Lee

## Article from 2003

I came across the newsletter from November 2003 the other day & found it interesting to re-read two decades later. I was struck by the things that are no longer part of our mission, the things that remain & the many new aspects of our church family life that we now enjoy.

Bookstall and Creche rotas no longer feature but the following are still going strong - minister's letter, family news, details about the Christmas Fayre, article about the Harvest Festival, information about Gift Aid & used postage stamps! Many contributors are no longer with us & this is balanced by the number that are now part of our fellowship in many

new ways. The leaflets about Wesley's displayed on the tables & the posters on the display board show ways in which we continue to welcome everyone.

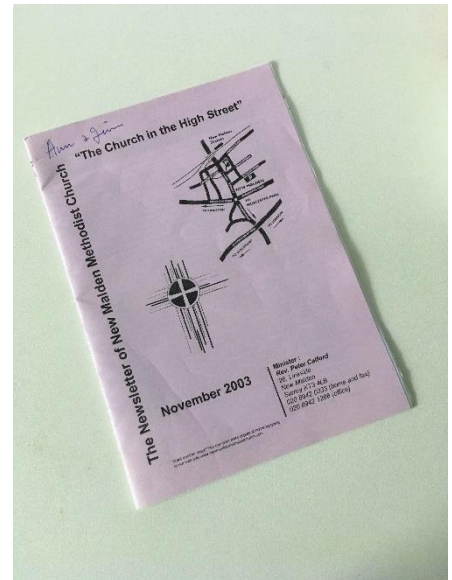
The magazine itself is in black & white with an invitation to send items to the then editor – Mick Taviner – by floppy disc. Our online presence had not been considered & the magazine was available only as a hard copy.

I wonder what facets of our church community will be included in the 2043 edition. Just a thought!

Rev Peter Catford's final thought in his letter reminds us of our calling. *Let us not forget to allow the fruits of the spirit to work in our lives as we live as we are called - to be communities of hope, prepared to allow the Holy Spirit to continually change us, as we seek to live following Jesus now in our ever-changing world.*

Liz Edwards

PS I presume my mother-in-law kept this copy as it had a photograph of her grandchildren holding their JMA certificates!



---

## Knitting for RB Kares

Kate Kenyon from RBKares came along to Wives & Friends on Tuesday 24<sup>th</sup> October to receive the many hats, scarves and blankets that have been knitted by many ladies within and around the church community. Kate was amazed and delighted at the volume of knitting that had been produced, plus the £300 raised to support her fundraising.

On the RBKares Facebook page Kate said

*I had a great evening meeting the lovely ladies from the New Malden Methodist Church and telling them about the work RBKares - Supporting the Community does in the community. Our projects are only made possible with help from groups like this. As well as raising money for us they certainly boosted the bobble hat count for our Christmas tree of hats project. Truly incredible!*

and she later sent the following email to Stella:



*I wanted to thank you and the wonderful ladies in your group for the wonderful donation to RBKares. This will help us so much with the things we need to buy for our warmer in winter bags. Getting support from groups like yours makes the world of difference to what we can achieve and the impact we have.*

*And those hats - what an incredible sight to behold when I came in. They are absolutely perfect for our trees and will help make them more impactful. The people who will get the hats will be delighted, especially with the colourful pompoms. Someone has a great talent in pompom making!*

*Thank you once again for all your amazing support.*

Huge thanks goes to the many ladies who helped with this fantastic effort. The picture shows Maureen (who knitted scarves), Stella, Judy, Doreen, Greta and Claudine (who knitted many of the hats), but there were many other contributors including Andrea Mooton's hats, Jennifer Davy's scarves and several ladies from Surbiton Hill Methodist Church.





A special mention must also go to Judith McCarthy (second from right below) who made nearly all the bobbles!! She will now be known as the Bobble Queen.

And of course to Stella whose drive and enthusiasm inspired everyone.



The impressive array of knitting!



## Circuit Plan

	<b>CHESSINGTON</b> 10.00 am	<b>KINGSTON</b> 10.30 am; 6pm	<b>NEW MALDEN</b> 10.30 am	<b>SURBITON HILL</b> 10.30 am
	<i>Korean Language Service at Chessington on Sundays at 12.30 led by Rev Paul Han</i>			
05 November	M. Wakelin: HC J. & M. Wakelin 4pm SR	Maraj-Ogden: AAW No Service	Webb: AAW No Service	Vernon Coveney: PP 4.30pm
12 November	M. Wakelin: R	Rutlidge: R/HC	J. Wakelin: R	10.45: Maraj-Ogden: R (WM)
19 November	S. & D. Lloyd: C No Service	M. Wakelin Rutlidge	Rutlidge: HC No Service	Maraj-Ogden: HC No Service
26 November	Maraj-Ogden	Rutlidge	Fullbrook	Stonehewer
03 December	M Wakelin HC	Maraj-Ogden G	Rutlidge G/HC	S Lloyd 4.30pm Coveney: PP
10 December	D & S Lloyd C	Rutlidge AA/HC	Webb	Maraj-Ogden: G 5pm Maraj-Ogden CC
17 December	J&M Wakelin AA/G/P	Rutlidge N 6pm Rutlidge CL	CA (LA)	Maraj-Ogden 5pm Maraj-Ogden CL
18 December	8pm M Wakelin CL	No Service	No Service	No Service
21 December	No Service	No Service	7.30pm Rutlidge BC	No Service
24 December	M Wakelin 11.15pm M Wakelin	CA (LA)	Rutlidge 5pm Christingle 8pm Rutlidge HC	Maraj-Ogden HC 4.30pm Maraj-Ogden CG 8pm Maraj-Ogden HC
25 December	M Wakelin	Rush: AA	Rutlidge: AA	Maraj-Ogden
31 December	LA	Bridges	Stonehewer	LA
07 January	M Wakelin CV/M	Webb AA	Rutlidge CV	Maraj-Ogden CV 4.30pm Coveney: PP
14 January	M Wakelin	Rutlidge CV	Maraj-Ogden	Stonehewer
21 January	D&S Lloyd C	Rutlidge 6pm Rutlidge HC	Bridges AA	Maraj-Ogden
28 January	M Wakelin	Maraj-Ogden CF	Vernon	Rutlidge
04 February	M Wakelin HC	J Wakelin	Rutlidge AA	Fullbrook 4.30pm Coveney: PP
11 February	Cocking	Rutlidge/S Lloyd AA/HC	Webb	Vernon
14 February	7.30pm M Wakelin W/E	No Service	7.30pm Rutlidge W	No Service
18 February	S Lloyd & M Wakelin C	J Wakelin 6pm Rutlidge	Rutlidge HC	LA (Testimony)
25 February	Maraj-Ogden	Stonehewer	M Wakelin	Coveney
<b>Abbreviations</b> AA: All Age Worship BC: Blue Christmas C: Contemporary Service CA: Carol Service CC: Choir Café CF: Café Church CG: Christingle CL: Carols by Candlelight CV: Covenant Service E: Ecumenical Service G: Gift Service HC: Holy Communion LA: Local Arrangement N: Nativity P: Parade PP: Praise Party R: Remembrance Sunday SR: Service of Remembrance/Time to Remember WM: At War Memorial				

# Quiet Day

**Saturday 11 November 2023**

I'd like to invite you to come along to the next **Quiet Day**, which is going to be on

## **'The foundations of faith'**

I have reached an interesting point in my life.

I have absolutely no doubt at all about the value of my spiritual life of faith in God.

Yet I have no certain foundation on which my spirituality, my faith, and my experience of God rests, and so I want to explore what this foundation might be. I've reached the stage in life that whatever my faith is and wherever it comes from, it's so precious that I feel certain that this is the most that life can offer.

However, for large periods of my life, it did bother me intensely that I should have a certain foundation for my faith that I could not doubt. If I had understood when I was 20 what I did when I was 40, perhaps I would never have embarked on the life of faith. By the time I was 60, I was fully content with my faith, but how can we appeal to new generations that have never started on the journey of faith?

**So:**

- ***If you are feeling secure in your faith, let's explore together the inexhaustible spiritual gifts to be found in God's presence.***
- ***If you love your faith, but are sometimes beset by doubts, or confused, or only experience God's presence irregularly, then let's think through how to handle the realities of our spiritual lives.***
- ***If you feel warmly enfolded in God's love, and long for others to know this too, but are frustrated as to how to get through to them, then let's consider how to win people over to the revelation that God loves them too.***

**Denis Vernon**

If you have never attended one of these days, you are warmly invited to join in this opportunity to take time out in quiet fellowship with others. Many are familiar with the special atmosphere at the **House of Prayer** where we use the house and grounds for our times of meditation - The House of Prayer, Seymour Road, East Molesey KT8 OPB.

We gather at 10.00 for 10.30am and there is plenty of parking. We conclude with communion and leave about 3.30pm. You are invited to bring a packed lunch, but hot drinks and snacks are available throughout the day. It's fine just to come on the day but helpful if you let me know or sign on the attendance list beforehand and indicate if you would like transport. Donations are welcome on the day. Jeannette Barwick.

07950 458657

[jbarwick313@btinternet.com](mailto:jbarwick313@btinternet.com)

## Music in New Malden

Sunday 12<sup>th</sup> November 3.00pm

### Matt White (classical guitar)

Matt White started playing the guitar at the age of 8 and went on to study at the Royal College Of Music with Charles Ramirez, Carlos Bonell and Gary Ryan, graduating in 2005. He has participated in masterclasses with John Williams, Ricardo Iznaola, Bill Kanengiser and Craig Ogden among others. Matt's recital programmes are varied and include music from the renaissance to the twenty first century. He has performed in London's Bolivar Hall and across Europe as a soloist (concerts in the UK, Norway, Switzerland and Italy).

Visit Matt's website at <http://www.mattwhiteclassicalguitar.com/index.html>

His programme on 12 November is a varied one, introducing numerous aspects of the sound and technique of the guitar. He will also talk about the instrument and repertoire - rather like the earlier series of Music in New Malden, when players from Ensemble DeNOTE introduced their sometimes unfamiliar fortepianos, classical clarinets, baroque violins, natural horns, and so on!

### Phantasia in D Major by David Kellner (1670 - 1748)

### Collctici Íntim by Vicente Asencio (1903 - 1979)

La Serenor, La Joia, La Calma, La Gaubança, La Frisança

### Koyunbaba by Carlo Domeniconi (Born 1937)

### Triste Musette and Alba Nera by Roland Dyens (1955 - 2016)

This is an opportunity to meet a quality local player, and encounter less familiar pastures of the chamber music repertory. Ticketsource QR code below for discounted online booking (tickets also available for cash at Wesley's cafe and on the door (£10)).

Followed, as ever, by tea and cake.



## Christmas Fair – Friday 24<sup>th</sup> November 4.30 – 7.00pm

The clocks have gone back now which means that Christmas is fast approaching and the Christmas Fair will be the first in our programme of events and services (more of which later).



The usual stalls and fun will be in evidence with favourites like books, puzzles, jewellery, crafts and decorations.

Plus the ever popular soft toy tombola, chocolate tombola and so much more.

To make this a tremendous success we need YOU to help and donate.

From the beginning of November, there will be a basket in Wesley's to collect donations (PLEASE NO Bric-a-brac or videos), so look out your books, toys, puzzles, games, unwanted gifts, toiletries, DVDs, soft toys, jewellery, or knit and sew for the craft stall. Donations for the lucky dip are needed in advance so they can be wrapped the Friday before.

Help on the day is essential so please sign up on the sheet which is on the noticeboard in Wesley's so we know who is available and can allocate a specific space. One sign-up sheet has been filled so a second sheet is now up. Please do not sign up again if you already have but help is still required. Please do not presume we know because you always come!

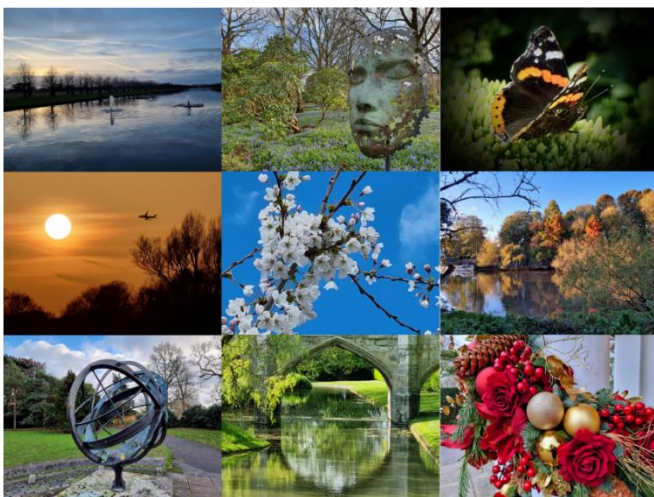
If you cannot man a stall, could you help with setting up (from 12.00 noon onwards) or with the clearing away after 7.00 (finished by 8.30pm last year!).

We will also require help with moving the chairs on the evening of Thursday 23<sup>rd</sup>.

The more the merrier to make it all run smoothly and not take too long!

---

### On sale now!



 **New Malden  
Methodist Church**  
*At the heart of the High Street*

**in aid of the Boiler Fund**

2

0

2

4

Charity calendar in aid of the Boiler Fund, packed with Karl's photographs.

This perfect Christmas gift is on sale now priced at £10 each.

Don't miss out!

## Christmas services & Events

At time of press, these are the events and services planned for November and December.



### November

Friday 24<sup>th</sup> 4.30 – 7.00pm Christmas Fair  
As Father Christmas turns on the lights in the High Street

Monday 27<sup>th</sup> 7.30pm Chobham Handbell Ringers Christmas Concert

### December

Saturday 2<sup>nd</sup> 9am – 4pm Christmas tree sale on patio

Sunday 3<sup>rd</sup> 10.30am Gift Service Donations of luxury goods for Food Bank

Friday 8<sup>th</sup> 10am-2 **and** 6-7pm Christmas tree decorating for festival

Saturday 9<sup>th</sup> 9am – 4pm Christmas tree sale on patio  
10.00am Wesley's – NMMC for the Christmas Tree Festival  
10.00am – 4.00pm Christmas Tree Festival (CTF)  
10.15 – 11.45am Rehearsal for Lessons & Carols (Choir Vestry)

Saturday 16<sup>th</sup> 9am – 4pm Christmas tree sale on patio  
10.00am – 12.00 Wesley's – currently vacant  
10.00am – 4.00pm Christmas Tree Festival  
10.15 – 11.45am Rehearsal for Lessons & Carols (Sanctuary with CTF)

Sunday 17<sup>th</sup> 10.30am Lessons & Carols

Thursday 21<sup>st</sup> 4.30pm Service of Remembering (replacing Blue Christmas)

Saturday 23<sup>rd</sup> 10.00am – 1.00pm Wesley's – NMMC for the Christmas Tree Festival  
10.00am – 1.00pm Christmas Tree Festival  
11.00am (ish) Carol singing in the High Street.

Sunday 24<sup>th</sup> 10.30am Morning Service  
5.00pm Christingle Service  
8.00pm Communion Service

Monday 25<sup>th</sup> 10.30am Christmas Morning Service

Saturday 30<sup>th</sup> Wesley's opening to be confirmed

Sunday 31<sup>st</sup> 10.30am Striking of Christmas Trees after service

### Wesley's closures (Bank Holidays)

Monday 25<sup>th</sup> December, Tuesday 26<sup>th</sup> December, Monday 1<sup>st</sup> January



Dear supporters of MLLU,

We're all very aware of the horrific situation in Israel/Gaza but, sadly, we cannot forget what atrocities have been going on for the past 18 months in Ukraine, news of which is dwindling.

Medical Life Lines Ukraine has been incredibly busy in the last 18 months and **has now delivered a total of 42 ambulances to Ukraine, laden with humanitarian aid**, and media interest has gathered apace here, in Ukraine and in America. There have even been a number of volunteer drivers who have flown over from the States to the UK to drive some of the ambulances. Another is about to arrive from Australia! Amazing!

The next convoy leaves on **Sunday 19<sup>th</sup> November**. This will be our last one before Christmas. We really want to push the boat out in terms of donations for this trip and we would seriously appreciate your help.

Here are some thoughts on ways you can help with our appeal:

- Below is a list of specific items that are required. Some of these need not be new but should be clean and in good condition. If you are able to collect donated items from your friends and family, we can arrange a collection from you.
- That attachment also contains a link to an **Amazon Wish List** for items that have been specifically requested - it is easy to use and any item can be sent direct to the Putney address indicated, ready for loading.
- Cash donations are much needed, especially now as there is an urgent need for some very specific dressings which cannot be bought from Amazon. An easy way to send money is to our Wise bank account: **Medical Life Lines Ukraine Ltd, Sort Code 23-14-70, Account 80932896, Ref: MedAid** - and we will do the rest.
- An approach to your local pharmacist may be worthwhile - whilst they cannot pass on unused prescription drugs (and indeed we cannot send them to Ukraine), they often have an excess of other items that could be useful. Some small independent pharmacies have already been very willing to help.
- If you have any specific contacts for larger donations that you think might be of use and would like MLLU to make a formal approach, please do let us know.

Every donation, no matter how large or small, is of real value to the hospitals, rescue workers and residents in Ukraine. Let's deliver them some hope and warmth for Christmas. Please spread the MLLU word far and wide. With all good wishes and many thanks from all of us at MLLU.



Painkillers (Paracetamol/Ibuprofen)  
Sudocream

Wet wipes  
First Aid kits  
Anti-flu and cold medicine (Lemsip etc)  
Gastric medicines  
Deep heat warming ointments  
Incontinence pads/ pants for adults  
Feminine products

Thermos for food

Insulated flasks for liquid  
Thermal bags - hot & cold

Ready to eat food  
Freeze-dried food  
Energy drinks and bars  
Sweets

Men's Thermals/base layers  
Men's fleeces, trousers, socks, raincoats  
Used Gortex men's shoes, Wellies

Dog food for Search and Rescue dogs

**Deliver to:**

Sally Strahan

1 Luttrell Avenue, SW15 6PA

07786-225522

sallystrahan@outlook.com

Wheelchairs  
Folding cots  
Any mobility aids  
Slings  
Crutches

Sleeping bags  
Tents and Camping mats  
Large/medium back packs  
Computers & tablets (good working order)

Chain saws  
Electric drills  
Tow ropes  
Grinders with diameter of 180.230  
Head torches  
Power banks

**Or:**

Aliya

Aralbayeva

134 Somerset Rd SW19

5HP

07949-

288456

info@medicallifelines.org.uk

**LINK for AMAZON WISH LIST**

<https://www.amazon.co.uk/hz/wishlist/ls/XPRP7B8OBHRN?ref=list-d-wl-lfu-nav-1>

(Send to Sally Strahan's address above, not Gift Registry address)

**Wise Bank Account for cash donations for vital medical items not available from Amazon**

Medical Life Lines Ukraine Ltd, Sort code 23-14-70, Acc no 80932896

Ref: MedAid

## Quiz - Countries without Vowels



DNMRK		STRL	
GRMNY		GRNLND	
BLGM		SPN	
JPN		RGY	
LXMBRG		GRC	
MXC		PR	
GHN		VNZL	
THP		TLY	
MRCC		NGLND	
ND		CHN	
CND		CHL	

---

## Ancestral Mathematics

in order to be born, you needed

2 parents

4 grandparents

8 great-grandparents

16 second great grandparents

32 third great grandparents

64 fourth grandparents

128 fifth great grandparents

256 sixth great grandparents

512 seventh great grandparents

1,024 eighth great grandparents

2,048 ninth great grandparents

For you to be born today from 12 previous generations, you needed a total of 4,094 ancestors over the last 400 years.

Think for a moment - How many struggles? How many battles? How many difficulties? How much sadness? How much happiness? How many love stories? How many expressions of hope for the future? – did your ancestors have to undergo for you to exist in this present moment .....

## Nice!

In September I had a lovely week in Nice. All around the city were animal sculptures by the Richard Orlinski. The apartment I was staying in was just off the Promenade de Anglais and it was here that this lovely bear stood.

In the evening the moon would rise above the bay and it was as if the bear was trying to catch it.

Stella Chattle



Caught!

## The Caption Competition



- Peter thinks Alison is joking when she tells the audience they can't leave until they have paid.
- Who IS that floozy with my Peter?
- Stage whisper: A tenor says she'll be bringing him back by the end of the week.



- Doreen demonstrates how the tambourine was used as a weapon in Ancient Greece before people realised it also made a nice musical noise.
- Doreen did not take it well when told she couldn't play her bagpipes!
- A local celebrity tries out for Strictly
- 'Lift high the cross?'

---

### More on the Amusing Shop Front

Clive Edwards sent these in. Surely neither of them could be applied to our outgoing Treasurer!



Caroline spotted this amusing sign at the laundry in Silsden ....



.... And in Saltaire.

“Don’t tell Titus” in Saltaire, Yorkshire. Saltaire was founded or funded by Titus Salt who designed his town so that all roads led to the mill and not via any pubs. Though he wasn’t tea total himself, he didn’t want his workers stopping off for a swift half or worse.





A bit further up the road was Salt Hair. Good effort again.

---

### A Few More Photos



From Chris Haines: Chipped teapot?..Don't landfill it...donate to a bird 😊❤️

. It even has its own drainage system...

A very welcoming Methodist church  
from Caroline Auty

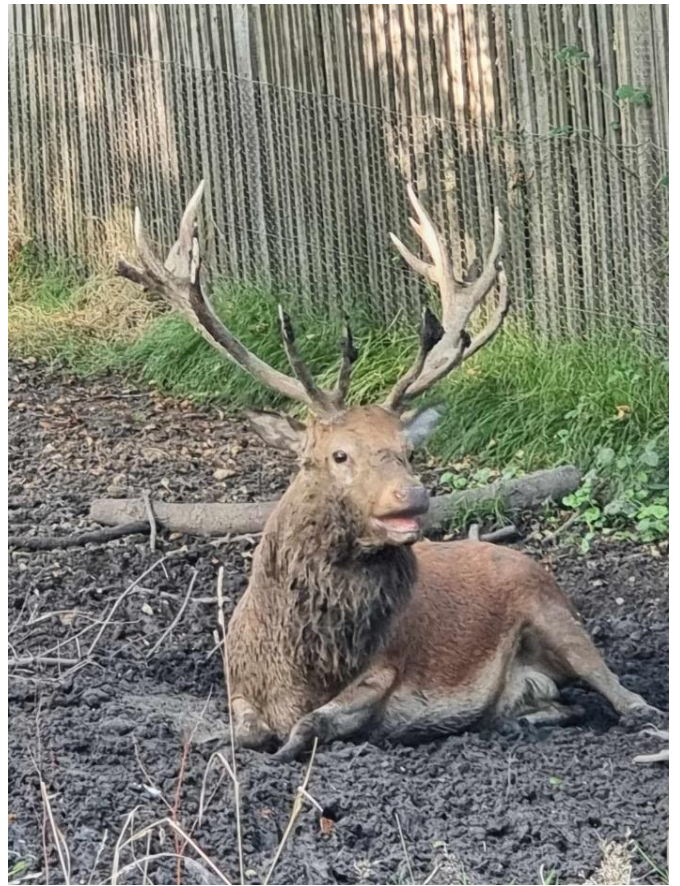




A deer enjoying the autumn sunshine  
from Alison Bullett

### And Finally

Returning to the ever popular  
'amusing photos of the minister' theme  
for next month's caption competition.



A magnificent stag who seems to be  
warning Karl not to get too close!





# Christmas Concert

## St Lawrence Chobham

### Handbell Ringers

*Musical Director Tim Willetts*



Monday 27<sup>th</sup> November at 7.30 pm  
New Malden Methodist Church KT3 4BY



*A concert of Christmas music by a renowned Surrey-based group of 12 ringers who perform locally and internationally using a five octave set of bells made at the Whitechapel Bell Foundry in 1908*

**Followed by Wesleyan Punch and mince pies**  
**In aid of NMMC's Boiler Fund**

Tickets £10 from

<https://www.ticketsource.co.uk/nmmc>  
and Wesley's at NMMC 10am -2pm M-F (cash)

