



New Malden
Methodist Church

*At the **heart** of the High Street*



Spotlight

March 2024

Message from Karl

March is one of the key turning points of the year, in that we begin to leave behind the cold and darkness of winter, and look towards the warmer and longer days to come. In the northern hemisphere, Spring officially starts on 20th March, and already new leaves are appearing upon the bushes and trees. Hence, this is a season when we naturally think about new life and fresh beginnings breaking in, amid the apparently unpromising conditions currently around us.

As Easter is somewhat on the early side this time around, the bulk of Lent falls within March, with Easter Day on the 31st of the month. New life and fresh beginnings is the theme of Easter, as we celebrate the resurrection of Jesus Christ from the dead, and his continued presence amongst us through the Spirit. Rowan Williams describes the resurrection as being like a second Big Bang, an explosion of fresh creative energy into the universe, and indeed the biblical imagery of the new creation breaking through points us to the (often unexpected) possibilities for transformation this opens up.

However, there's a drawback: we cannot get to the resurrection of Easter Sunday without first going through the crucifixion of Good Friday. This movement from death into new life is most clearly visible in baptism, especially when it's done by full emersion. We go down into the water, which symbolises dying to sin and all that damages relationships, and then we emerge as a new creation, reborn into the new life of the kingdom of God. Both parts of this dynamic are vital, and there's no circumventing the former. To embrace the new, we must let go of the old, which can be painful as well as liberating.

For some within our communities, this can be an especially difficult season, because while spring is breaking out all around them, their hearts are still in more of a winter place. This year has been a tough one for our church, as we've lost more than one beloved member of our community, and it feels to me like we're a bit too well-acquainted with grief. Not rushing past Good Friday, then, but being able to sit at the foot of the cross and bring to

God the sadness we hold, may well prove just as important this year as celebrating the joy of resurrection.

The thing that has sustained me when times have been very hard, and I've experienced loss in my life, is resurrection hope. God's raising Jesus from the dead acts as a promise that the new creation thus begun will, in the fullness of time, be brought to its completion, and so as Revelation 21 shows, death and suffering and tears will not have the last word. That can be hard to believe when we're in the midst of grief and the kind of confusion and disorientation that brings, as the first disciples found when they gathered in the upper room following Jesus' death on the cross, but it's nonetheless true.

As we move through Lent towards and through Holy Week, showing the signs of God's new life and fresh beginnings in our fellowship and care for one another is one way we can celebrate both Easter and the changing seasons. Winter is not forever, even though the darkest hour is just before dawn. It feels a bit odd not to be there with you physically when the Son rises, but know that I am with you in spirit, and I pray this time will be fruitful and blessed for you all.

Until we meet again, Karl

There are some photos from the first part of Karl's trip later in this issue. Sarah

Spotlight's Safeguarding Space

In February Wesley's volunteers attended Safeguarding Awareness Training. The training was well-received and I quoted The Methodist Church website when I said, "The Methodist Church recognizes the value of volunteers & gives grateful thanks to each & every one of you" because it is certainly true for us at The Church at the Heart of the High Street.



There is an increasing number of people who enjoy coming to Wesley's either for a cuppa or to participate in the Wellness Activities and I am certain that all customers enjoy the safe and welcoming atmosphere.

I received an email from one of our volunteers and I would like to afford her the opportunity to speak directly to you - the customer.

"Liz pointed out that we already have certain rules in place to protect both our volunteers and our customers. One of these is that volunteers always work in pairs and another is that opening times are strictly 10am to 2pm. This means that they should not be letting anyone in before 10 o'clock. It is important that all our volunteers abide by this otherwise it sets a precedent. I really enjoy my Wesley's shifts but when customers want to come in too early or stay too late it can bring a little cloud to my day so please be kind and make sure you respect our opening times. They are there for a reason!"

Liz Edwards, Safeguarding Officer

News from Jane Bennett

Jane has sent greetings to you all. She is now living in Trowbridge in Wiltshire with her son and regularly sends us cards with every piece of available space filled with her lovely handwriting telling about her life now and recalling her youth and married life with David who was a Methodist Minister and missionary. I always pin the cards on the noticeboard, so keep a lookout. She has recently sent me some “non-news” to put in Spotlight if I ever need “fillers”:

“Whatever I write will definitely be non-news, and usually incidents from long ago in my far-off youth. It is really quite surprising how some incidents can be recalled accurately after so many years and almost another lifetime away!”

Jane particularly recalls some epic cycling trips which would give even Dave Moore a run for his money.

“In my teens I was an active member of the Youth Hostels Association and used to cycle long distances – once up England on the West side, over the Pennines via Holmfirth – ‘Last of the Summer Wine’ area, then down the East side via Leeds and Norwich to my grandparents in Kew then home to Winton (Bournemouth) in 2½ weeks. All on a normal 3 gear ‘sit up and beg’ school bike. No derailleur gears!”

Jane’s latest card was prompted by Karls’s sabbatical.

“Sending good wishes to Karl on your epic sabbatical adventure! I think sabbaticals were a recent ‘thing’ during the last few years of David’s ministry and he arranged to travel to Malta and visit some of the places mentioned in St Paul’s writings. I managed to go along too, it was a great adventure for us both, and very spiritually enlightening for both of us. We worshipped in many different churches, often in the local language – not understanding every word didn’t seem to matter, the welcome and fellowship were great! I had plenty of opportunity to swim, either in hotel pools or the Mediterranean Sea – what fun! Not exactly tropical, but warmer than in Bournemouth before school in the summer term!”

Lovely to hear from you Jane. Keep the cards coming 😊

Warner & Cho Family Update

As many of you know I spent the best part of 18 months living with my parents in Andover after first my Dad then my Mum fell ill. During that period I was very aware of all the love, support and prayers from my friends at NMMC and Wesley’s so I’d like to say a big thank you to you all. My husband, Sunkoo, was enormously understanding – in Korean culture parents come first so he encouraged me to spend as much time with them as they needed. My stay came with many blessings. Our relationship became closer, I learnt a lot about gardening, my cooking skills improved dramatically and I took up driving again after a hiatus of more than 20 years! I also had a healthy structure to the day – alarm at 8am, breakfast

8.30, lunch 1pm, tea 6.30, bed by 10.30. My life in New Malden is nowhere near as disciplined. Being married to a chef means I eat most meals on my own so I really appreciated having company at mealtimes.

I'm delighted to report that my parents are now fully self-sufficient again. I only need to visit occasionally to accompany them to any health appointments. Mum has resumed playing tennis once a week, weather permitting, and has just started a pilates class. Dad used to play in a brass band but has decided that he no longer has the puff so they went together to a rehearsal to return his cornet and stayed to enjoy the music. The members had all signed a card for him with some lovely comments – he'll certainly be missed. They belong to Salisbury Musical Society, practicing weekly and doing a concert at the Cathedral at the end of each term. They don't feel up to any foreign holidays now but the three of us are planning to visit the Isle of Wight when it gets warmer – something to look forward to.

Back in New Malden I'm very happy to be able to volunteer at Wesley's again. I missed it while I was out of circulation. You can usually find me there on a Monday.

In November after months of searching for the right premises, Sunkoo's brother opened a restaurant called Zazza Korean Noodles. Sunkoo is head chef, his brother works with him in the kitchen, my sister-in-law runs front of house and I help part-time with waitressing and admin so it's a proper family affair. My favourite job though is refilling the drinks cabinet! In January I was delighted to welcome my family for a Saturday lunch there – Mum, Dad, me, my two brothers and their wives – a very happy occasion. You are all of course warmly invited to come and sample our cuisine!

Hilary Warner



Zazza Staff



The Warners

Sad Church Family News

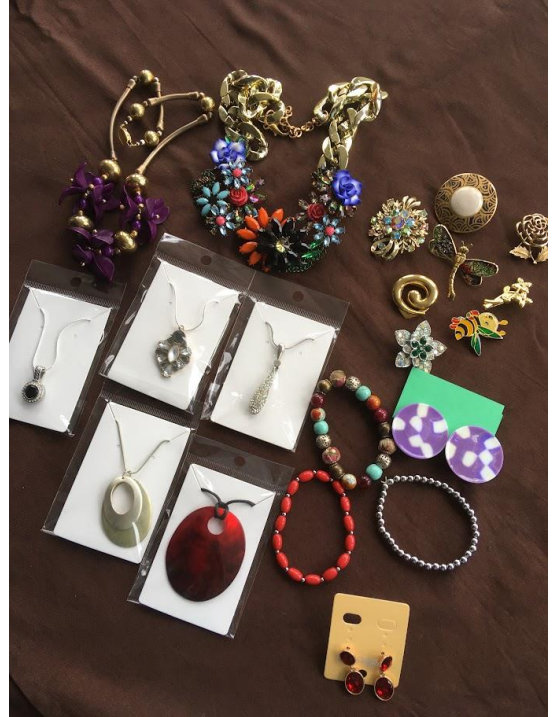
We are sad to report that we have heard of the death of one of our Wesley's volunteers, Sinja Grady. We pray for God's comfort to her family.

Jewellery

In the June 2023 edition of Spotlight I asked for jewellery donations that I could sell to raise money for the boiler fund. Since then £317.67 has been filtered into the Saturday morning Coffee Bar takings as well as £130 raised at the Christmas Fair. A huge 'thank you' to all who have supported this venture.

Collecting, sorting and selling the jewellery has become a retirement hobby and so I intend to continue to raise money for different charities being supported by the church. As such I plan to set up the stall on Saturday 2nd March and the amount raised will be added to the Family Quiz (March 16th) takings for the Alzheimer's Society. This neatly matches the charity Lee is supporting that morning.

Please contact Sarah or one of the stewards if you would like to raise funds for a charity close to your own heart by running a Saturday morning yourself.



At the AGM in September it will be decided which charities New Malden Methodist Church will support for the following year. You are welcome to make suggestions. In the past we have opted for two charities - one home and one abroad.

Liz Edwards

Wesley's Community Hub

A channel of God's love through service and care for all

Wesley's is getting very much busier which is great news! The Knit and Natter and Tai Chi sessions are very popular, and Walking with Nature will be returning in March. Also, the Health Check Drop-in was very well attended and we hope to be able to repeat this in the future.

The Bereavement Cafe, Creative Art Group, Board Games Group and Writer Group are still ongoing and essential to stay active, and we deeply appreciate the ongoing support from the volunteers who manage them.

All these programs embody our outreach and community bonding mission (see the Wellness Program on the back page). Join us to share God's goodness, contributing to our

journey towards stronger, connected communities rooted in faith.

Every blessing, Lee Monczak

For updates please follow us on Instagram/Facebook. If you can help, let us know.
Your likes and follows on Wesley's Instagram and Facebook mean a lot to us.

For the latest updates and more information, follow Wesley's on Facebook and Instagram:

👉 Facebook: <https://www.facebook.com/wesleysnewmalden/>

📷 Instagram: <https://www.instagram.com/wesleysnewmalden/>

Stay tuned and be a part of our community's journey!

Every blessing, Lee

Please collect your Wesley's calendar for March 2024 from Wesley's

Don't be shy now

Lee, our amazing, outreach worker, is finding new ways to advertise Wesley's to the good people of New Malden. One of the things she wants to do is profile Wesley regulars on social media. This involves people having their photo taken and answering a few questions about how long they've been going to Wesley's, what they particularly enjoy about it, and something interesting about themselves.

This can be done by email but I'm helping Lee a bit by interviewing people too. If you go to Wesley's for a drink, take part in any activities, volunteer there and you're happy to be interviewed then just let me know and I'll find five minutes to sit down with you.

Don't worry it won't be like Newsnight and we'll keep any personal info to a minimum.

Caroline Auty

Saturdays in Wesley's

The final Saturday coffee bar for the Boiler fund on 10th February raised £315.06.
Thank you so much to all who have helped over the past 11 months on a Saturday morning.
Baked, served and just came to purchase cake and coffee. Now we can go back to more sales for different charities so hope to see you again in future weeks.

Julie Haines

From Mary Garrett

I took the opportunity, very last minute!, to hire the coffee bar on Saturday 17th February.

I wanted to raise funds for JDRF (Juvenile Diabetes Research Fund). Ever since our

granddaughter, Violet, was diagnosed with Type 1 Diabetes at eighteen months we have struggled to come to terms with it and I have seen how much this condition affects your whole life and turns the world upside down. We have felt, as a family, we have been living



a parallel life to the 'normal' life we had before. It can separate you and cause such worry and doubt. Now Violet is at school, a thriving four and a half year old and I wanted to support and raise funds for others like Violet and their families.

All the funds raised for JDRF go towards research to help cure and eventually eradicate Type 1.

On the day I was overwhelmed with the response from the church members who stepped in to help and to all who came along and bought cakes and teas and coffees! It was a wonderful turnout. I found a WhatsApp group for Type 1 Parents and hope to meet grandparents in similar circumstances. Helen* who turned up to help with her daughter Alice was fantastic. Oliver, Alice's brother who has Type 1, popped in before football practice to prove you can have your cake and eat it !!!

Thank you from the bottom of my heart for being so supportive and welcoming me into the church.

Oh and the final Grand Total we raised was £470 !!! Give yourselves a pat on the back! (This proves how lucrative a Saturday morning coffee bar can be to raise funds for your chosen charity).

Mary Garrett



*Helen held a coffee bar last year, raising a huge amount of money for the Turkey/Syria earthquake appeal and will be holding a coffee morning on Saturday 9th March for the British Heart Foundation.

Saturday 13th April

A date for your diaries.

You may have met Sandi Johnson when she came into Wesley's a few weeks ago with her guide dog Kane. She booked a coffee morning on 13th April for Guide Dogs for the Blind when in addition to selling cakes she will have Guide Dogs merchandise on sale and there has been a rumour that there may be puppies to meet!!

Kane is looking forward to his return visit!



Music in New Malden - Vocalfest

The recent Vocalfest - a mini-series of three concerts celebrating various aspects of vocal music on consecutive Sunday afternoons - was very successful.

Audience numbers were very encouraging, and many people commented with approval on the novelty, variety and high quality of the wide-ranging musical performances.



We began with a concert performance on 4th February of Dido and Aeneas, Purcell's groundbreaking opera about the tragically short love affair between Dido, Queen of Carthage, and her lover Aeneas, who was tricked by the wicked plotting and subterfuge of evil spirits into abandoning Dido, leading to her heartbreak and death following the famous aria 'When I am laid in earth' (Dido's Lament).

The Harmonie Choir was supported by a hand-picked orchestra of local musicians led by Henrietta Wayne, an expert in Baroque performance practice. The solo parts were also taken by local musicians and members of the choir. Projected images and sound effects enhanced the lively and entertaining performance which was directed by Peter Bullett.

On 11th February we had a presentation entitled 'Edith Sitwell – Behind her Facade' given by the Art Sung Ensemble. To quote their publicity material: 'Art Sung, founded by pianist Elizabeth Mucha, is an ensemble of singers, pianist, actors and visual artists creating connections between music, art and narrative in a series of semi dramatised song recitals.'

Edith Sitwell's story was told in her own words, drawn from diaries and letters, against a backdrop of bespoke projected artwork. Lucy Stevens specialises in one-woman shows about under-recognised female artistes. On this occasion, she contrived to look astonishingly like the sculptures, silhouettes and photographs of Edith projected on the screen, and she and Michael Gibson sang settings of Sitwell's poetry by such composers as Benjamin Britten, Noel Coward and of course William Walton, whose notorious entertainment Facade shocked and delighted its early listeners in equal measure. Her aristocratic and eccentric lifestyle was thus well highlighted against the social atmosphere of the early part of the 20th century.

18th February saw a welcome return of New Malden Voices, a community choir directed by Jane Wilkinson (who also sang the part of Belinda in 'Dido'). These enthusiastic singers are noted for the purity and clarity of their tone, their confident and accomplished part-singing and their eclectic repertoire which on this occasion ranged from The Corrs to Handel, encompassing Abba and Bob Chilcott en route. Jane emphasised that they were an 'all-comers' non-auditioned choir, and anyone was welcome to come and join them on a Thursday evening in our Lower Hall – yes, even men!

Plenty of variety to be had there then, and hopefully something for everyone to enjoy. Our Sunday concerts always end with tea and cake, included in the £10 ticket price. The Vocalfest was a wonderful opportunity to welcome so many new people into our premises as well as our loyal regular supporters; performers and audience alike. A goodly sum was raised, of which a proportion will go to the Boiler fund, after the necessary expenses have been deducted.

Our various musical events are going from strength to strength. It takes a lot of effort to mount such high quality concerts and we are grateful to all concerned, particularly Peter who had the idea and did most of the work, from ordering and collecting the scores to moving the furniture as well as wielding a skilful baton. Thanks to all who came, for your faithful and generous support.

Alison Bullett

Our thanks also goes to Alison and Peter for their organisation and administration (and of course contribution) to the vibrant musical life of our church which brings so many people through the doors who would not otherwise come in. The diversity of the programmes brings people in and the quality of the music ensures that they spread the word and return. None of this happens without a considerable amount of work.

If this has whetted your appetite, there is more

March Music



Our **Tuesday lunchtime concert on 19th at 1.10 pm** features a welcome return by our local eight-hand two-piano group in a programme of orchestral favourites by Mozart, Bach, Tchaikovsky, Liszt and Moszkowski.



By contrast, on **Good Friday 29th at 8 pm**, a local ecumenical choir, orchestra with four outstanding soloists will present Part 2 of Handel's Messiah for the first time since 2018, which recounts and reflects upon the Easter story. Please see the rehearsal schedule in Diary Dates if you would like to sing. The first is on Saturday 9th March.

Please make a note of both events.

Peter Bullett

Saturday 16th March 6.00pm



Family Quiz

Tickets priced £5 each are now available from Julia Morton & Liz Edwards. Soft drinks will be provided. Please bring your own nibbles.



Proceeds to the Alzheimer's Society.

Sunday Powerpoint

Would you like to learn to control the power point?

It is easy really to do the job just on a Sunday morning.

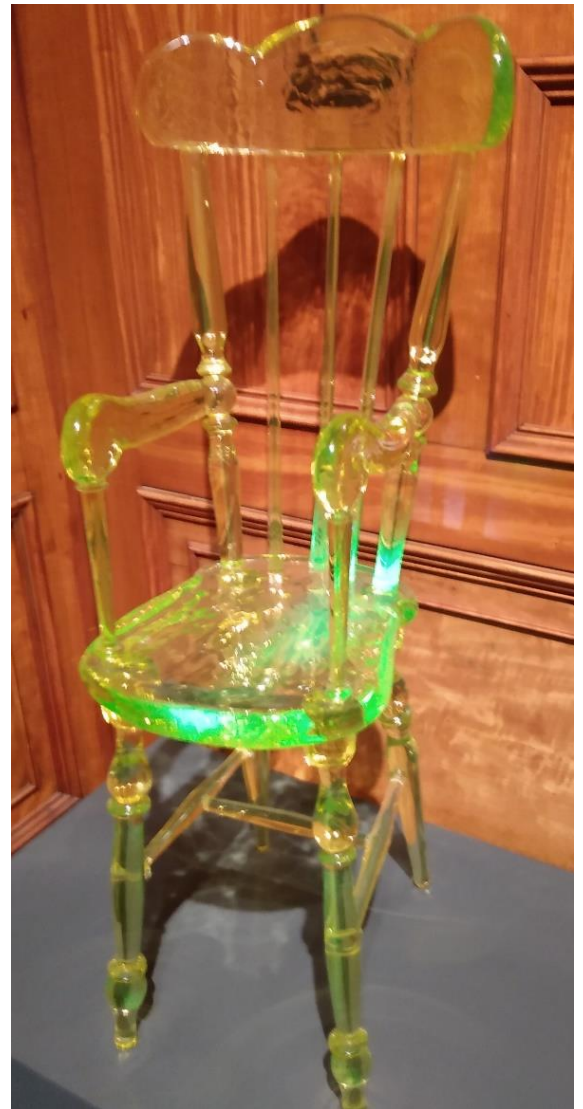
I am not seeking to find someone to prepare a power point, however being able to turn the machine on and set up the program would be a skill you could add to your CV.

Julie Haines

The Glass Heart

I recently visited Two Temple Place (WC2R 3BD, a stone's throw from Temple tube station) to see a free exhibition of fantastic glass works covering 170 years. The building alone is worth a visit if you have never been. Grade II listed and Gothic revival. It was the former estate office and private apartment of William Waldorf Astor. There are beautiful stained glass windows in the Great Hall. The building is only open to the public for a short period once a year. I guarantee that if you go you will not be disappointed. Exhibition closes 21st April. Not open Mondays (or Easter Sunday) www.twotempleplace.org Clive Edwards

Here are a few photos



NMMC Diary Dates – March

Saturday 2 nd	10.00am – 12.00pm	Wesley's – Alzheimer's Society – Lee & Family
Tuesday 5 th	10.30am – 11.30am	Walk with Nature
Thursday 7 th	2.00pm	Creative Arts
Friday 8 th	2.00pm	Board Games
Saturday 9 th	10.00am – 12.00pm	Wesley's – Vacant Please contact Sarah to book.
	10.00am – 11.45am	Good Friday Music Rehearsal
Tuesday 12 th	10.30am – 11.30am	Tai Chi
	2.30pm – 4.00pm	Bereavement Café
	7.30pm	Wives & Friends AGM & Games
Wednesday 13 th	7.45pm – 9.15pm	Good Friday Music Rehearsal
Thursday 14 th	11.00am – 12.30pm	Knit & Natter in Wesley's
Saturday 16 th	10.00am – 12.00pm	Wesley's – British Heart Foundation
	10.15am – 11.45am	Good Friday Music Rehearsal
	6.00pm – 9.00pm	Church Family Quiz
Tuesday 19 th	1.10pm – 2.00pm	Lunchtime concert
Wednesday 20 th	7.30pm	Pastoral Committee Meeting
Thursday 21 st	2.00pm	Creative Arts
	7.45pm – 9.15pm	Good Friday Music Rehearsal
Saturday 23 rd	10.00am – 12.00pm	Wesley's – New Malden Rotary Club
	10.15am – 11.45am	Good Friday Music Rehearsal
Tuesday 26 th	10.30am – 11.30am	Tai Chi
	7.30pm	Wives & Friends – Easter Thoughts
Wednesday 27 th	8.15pm – 10.00pm	Good Friday Music 'Dress' Rehearsal
Thursday 28 th	11.00am – 12.30pm	Knit & Natter in Wesley's
Friday 29 th	am To be confirmed	Churches Together Good Friday service at St James' New Malden (there will be no Walk of Witness this year)
	8.00pm	Good Friday Music
Saturday 30 th March	10.00am – 12.00pm	Wesley's – Vacant Please contact Sarah to book.

Next Spotlight Issue

Please send all submissions to Sarah Moore at nmmc@hotmail.co.uk (or in my church pigeonhole). Please send me anything you think might be of interest: memories, news of members, advice for life, poems, photos, recipes, etc.

The deadline for the next issue is Wednesday 28th March.

Circuit Plan

Following Vindra's accident some changes have obviously had to be made to the published plan. The plan below has been amended to reflect the changes that are known so far.

We do of course wish Vindra a speedy recovery and look forward to welcoming her back soon.

	CHESSINGTON <i>10.00 am</i>	KINGSTON <i>10.30 am 6pm</i>	NEW MALDEN <i>10.30 am</i>	SURBITON HILL <i>10.30 am</i>
	<i>Korean Language Service at Chessington on Sundays at 12.30 led by Rev Paul Han</i>			
03 March	M Wakelin: HC	Rush	Fullbrook: AA	Webb 4.30: Coveney: PP
10 March <i>Mothering Sunday</i>	J / M Wakelin: AA	S Lloyd: AA	LA	J / M Wakelin: AA
17 March	S Lloyd: C	Stonehewer: JMA	Vernon: HC	D Lloyd
	<i>6pm: Circuit Service at Kingston - TBC</i>			
24 March <i>Palm Sunday</i>	J Wakelin	10am at St John's	Cocking	Cowgill
28 March <i>Maundy Thursday</i>	7.30pm at St Paul's	6pm: Charlton: E/HC	No Service	7.30pm at URC Tolworth: E
29 March <i>Good Friday</i>	M Wakelin: EW	10am: EW	10am: EW 8pm: M	10am: TBC
31 March <i>Easter Sunday/BST</i>	8am M Wakelin: HC 10am M Wakelin & Han: HC	Vernon: AA/HC	8.30 am: Cocking: HC 10.30am Bridges: AA/HCE	Cocking: HC
07 April	LA	Cocking: HC	Vernon: HC	Stonehewer 4.30: Coveney: PP
14 April	Han	Webb	Stonehewer	D Lloyd: LM
21 April	M Wakelin & S Lloyd: P	Bridges: AA LA	J Wakelin: AA	Maraj-Ogden: HC
28 April	M Wakelin: ACM	D Lloyd: CF	Fullbrook	Maraj-Ogden: B
05 May	M Wakelin: HC	J Wakelin	Maraj-Ogden: AA	Webb 4.30: Coveney: PP
09 May <i>Ascension Day</i>	7.30pm: E	No Service	No Service	No Service
12 May	D Lloyd	Maraj-Ogden: CA/HC	LA	LA
19 May <i>Pentecost</i>	D&S Lloyd: C	LA: AA M Wakelin: HC	M Wakelin: CA/HC	Maraj-Ogden: HC
26 May <i>Trinity Sunday</i>	M Wakelin	Rutledge	Maraj-Ogden	S Lloyd
Abbreviations AA: All Age Worship ACM: Annual Church Meeting B: Baptism C: Contemporary Service		CA: Christian Aid CF: Café Church E: Ecumenical service EW: Ecumenical Week of Witness HC: Holy Communion	HCE: Extended HC JMA: Junior Mission for All LA: Local Arrangement LM: Leprosy Mission M : Music for Good Friday PP: Praise Party	

Spring IS on the way!



I wandered lonely as a cloud
That floats on high o'er vales and hills,
When all at once I saw a crowd,
A host of golden daffodils,
Beside the lake, beneath the trees,
Fluttering and dancing in the breeze.

Continuous as the stars that shine
And twinkle on the milky way,
They stretched in never-ending line
Along the margin of a bay:
Ten thousand saw I at a glance,
Tossing their heads in sprightly dance.

The waves beside them danced, but they
Out-did the sparkling waves in glee;
A poet could not but be gay
In such a jocund company!
I gazed – and gazed – but little thought
What wealth the show to be had brought.

For oft, when on my couch I lie
In vacant or in pensive mood,
They flash upon that inward eye
Which is the bliss of solitude;
And then my heart with pleasure fills,
And dances with the daffodils.

William Wordsworth

The first day of spring is one thing, and the first spring day is another. The difference between them is sometimes as great as a month.

Henry Van Dyke

'Is the spring coming?' he said. 'What is it like?'...'It is the sun shining on the rain and the rain falling on the sunshine...'

Frances Hodgson Burnett, *The Secret Garden*

Nature gives to every time and season some beauties of its own.

Charles Dickens

To plant a garden is to believe in tomorrow.

Audrey Hepburn

Live in the sunshine Swim in the sea Drink in the wild air.

Ralph Waldo Emerson

Spring makes its own statement, so loud and clear that the gardener seems to be only one of the instruments, not the composer.

Geoffrey B. Charlesworth

In the spring, I have counted 136 different kinds of weather inside of 24 hours.

Mark Twain



No daffodils here but a lovely tranquil spot on Esher Common.



Barbara Cavalier's Simnel Traybake

Thank you Barbara, for another of your delicious recipes!

INGREDIENTS:

150g butter, softened
75g light muscovado sugar
75g dark muscovado sugar
2 tbsp golden syrup
4 medium eggs, beaten
200g plain flour
1 tsp baking powder
1 tsp mixed spice
Zest of 1 lemon
350g mixed dried fruit
200g white marzipan

STEP BY STEP:

Preheat the oven to 180C / fan 160C / gas 4
Grease and line 7in square tin

Sift the flour / baking powder and mixed spice together.
Put the butter, sugar and syrup in a mixing bowl and beat until light and fluffy (by hand or mixer)
Gradually add the beaten eggs, adding a little flour if the mixture starts to curdle.
Stir in evenly the flour mix, lemon zest and dried fruit.

Spread half the cake mix evenly across the bottom of your lined tin, then coarsely grate the marzipan over the mixture and even out.
Then cover with the rest of the cake mixture and level the top.

Bake for 35 - 40 minutes or until just firm to the touch.

Cool in tin for 10 minutes then put on a cooling rack to get cold.
When cold dust with icing sugar and cut into 12 pieces.
Store in air tight container.

This cake could be decorated as follows;

3 tbsp Jam
White Marzipan
Icing sugar

Warm the jam and glaze the top of the cake.
Lightly dust your work surface with icing sugar then thinly roll out the marzipan. Cut into 5mm strips and weave over the top of the cakes to make a basket effect.

Or

3 tbsp Jam
Yellow Marzipan
Warm the jam and glaze the top of the cake.
Lightly dust your work surface with icing sugar and roll out the marzipan to fit the top of you cake and decorate for Easter.

Barbara Cavalier



Karl contemplating the stack of birthday pancakes made for him by Lee for his 40th birthday which fell on Shrove Tuesday.

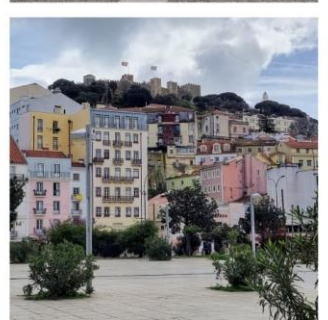
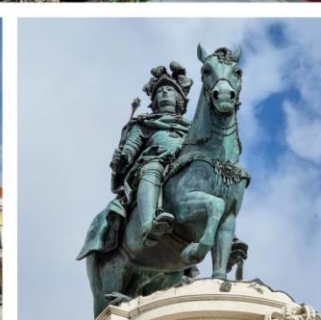
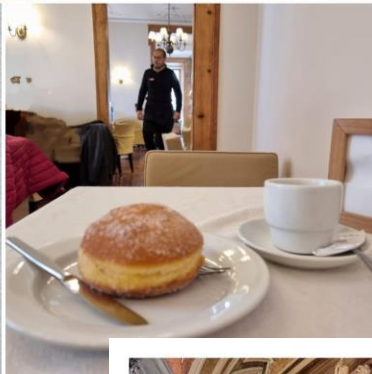
Photos from Karl's travels

Karl Had a great time exploring Lisbon. It is a city of huge contrasts, eccentricity and history.



Jack bear
enjoying the
view!





Church contact information – website www.newmaldenmethodistchurch.com

 NMMethodists

Revd Dr Karl Rutledge (Minister)

07932 242789 karl.rutledge@methodist.org.uk

n/a Monday

Mrs Sarah Moore (Administrator)

020 8942 1288 (Church Office)

(Mon & Wed 10am - 2pm, Thu 12 – 4pm)

nmmc@hotmail.co.uk

Mrs Lee Monczak (Development Officer)

nmmc.wesleys@hotmail.com

Mrs Julia Morton (Senior Steward)

juliamorton@virginmedia.com

Mrs Liz Edwards (Steward)

lizedwards513@gmail.com

Mrs Julie Haines (Steward)

juliehaines53@gmail.com



Join us in marking

International Women's Day

Friday 8th March at 7pm

Tickets – £11.50*

(*Includes £1.50 booking fee)

Our inspirational speakers:

Clare Ballantyne ~ Postmaster at the South Pole

Sarah Clay BEM ~ founder of Voices of Hope

Patricia Parker OBE ~ founder of Kids4Kids

**FUSE
BOX**

Scan here to book your ticket, or
visit our 'What's On' page via:
FUSEBOXKINGSTON.ORG →



FUSEBOX Kingston

2, Buckland's Wharf, Thames Side, Kingston upon Thames, KT1 1TF

Inner Wheel in Kingston upon Thames

Email: innerwheelclub-kot@hotmail.co.uk